

**bs-14050R**

**[ Primary Antibody ]**

## Creatine kinase MT Rabbit pAb

**Bioss**  
ANTIBODIES

www.bioss.com.cn

sales@bioss.com.cn

techsupport@bioss.com.cn

400-901-9800

### — DATASHEET —

**Host:** Rabbit

**Isotype:** IgG

**Clonality:** Polyclonal

**Target:** Creatine kinase MT

**Immunogen:** KLH conjugated synthetic peptide derived from human Creatine kinase MT: 121-220/417.

**Purification:** affinity purified by Protein A

**Concentration:** 1mg/ml

**Storage:** 0.01M TBS (pH7.4) with 1% BSA, 0.02% Proclin300 and 50% Glycerol.  
Shipped at 4°C. Store at -20°C for one year. Avoid repeated freeze/thaw cycles.

**Applications:** WB (1:500-2000)

**IHC-P** (1:100-500)

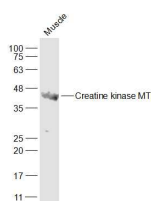
**IHC-F** (1:100-500)

**IF** (1:100-500)

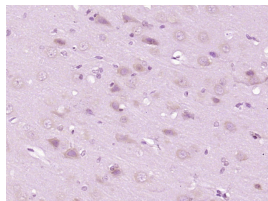
**Reactivity:** Mouse, Rat  
(predicted: Human,  
Pig, Sheep, Chicken)

**Predicted  
MW.:** 43 kDa

### — VALIDATION IMAGES —



Sample: Muscle (Mouse) Lysate at 40 ug Primary:  
Anti-Creatine kinase MT (bs-14050R) at 1/300  
dilution Secondary: IRDye800CW Goat Anti-  
Rabbit IgG at 1/20000 dilution Predicted band  
size: 43 kD Observed band size: 43 kD



Paraformaldehyde-fixed, paraffin embedded (rat  
brain tissue); Antigen retrieval by boiling in  
sodium citrate buffer (pH6.0) for 15min; Block  
endogenous peroxidase by 3% hydrogen  
peroxide for 20 minutes; Blocking buffer (normal  
goat serum) at 37°C for 30min; Antibody  
incubation with (Creatine kinase MT) Polyclonal  
Antibody, Unconjugated (bs-14050R) at 1:400  
overnight at 4°C, followed by operating  
according to SP Kit(Rabbit) (sp-0023)  
instructions and DAB staining.