

CRCP Rabbit pAb

Catalog Number: bs-14048R

Target Protein: CRCP

Concentration: 1mg/ml

Form: Liquid

Host: Rabbit

Clonality: Polyclonal

Isotype: IgG

Applications: WB (1:500-2000)

Reactivity: Mouse, Rat (predicted:Human, Sheep, Cow, Dog, Horse)

Predicted MW: 21 kDa

Entrez Gene: 27297

Swiss Prot: O75575

Source: KLH conjugated synthetic peptide derived from human CRCP: 21-120/148.

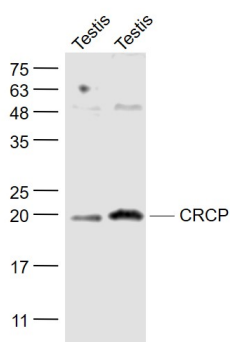
Purification: affinity purified by Protein A

Storage: 0.01M TBS (pH7.4) with 1% BSA, 0.02% Proclin300 and 50% Glycerol.

Shipped at 4°C. Store at -20°C for one year. Avoid repeated freeze/thaw cycles.

Background: This gene encodes a membrane protein that functions as part of a receptor complex for a small neuropeptide that increases intracellular cAMP levels. Alternate transcriptional splice variants, encoding different isoforms, have been characterized. [provided by RefSeq, Jul 2008]

VALIDATION IMAGES



Sample: Testis (Mouse) Lysate at 40 ug Testis (Rat) Lysate at 40 ug Primary: Anti- CRCP (bs-14048R) at 1/1000 dilution Secondary: IRDye800CW Goat Anti-Rabbit IgG at 1/20000 dilution Predicted band size: 21 kD
Observed band size: 20 kD