

bs-21907R**[Primary Antibody]****DLL1 Rabbit pAb****BioSS**
ANTIBODIES

www.bioss.com.cn

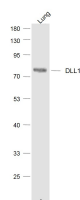
sales@bioss.com.cn

techsupport@bioss.com.cn

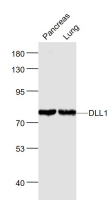
400-901-9800

— DATASHEET —

Host: Rabbit	Isotype: IgG	Applications: WB (1:500-2000)
Clonality: Polyclonal		
GeneID: 28514	SWISS: O00548	
Target: DLL1		
Immunogen: KLH conjugated synthetic peptide derived from human DLL1: 101-200/723.		
Purification: affinity purified by Protein A		Reactivity: Mouse (predicted: Human, Rat, Rabbit, Pig, Zebrafish, Dog)
Concentration: 1mg/ml		
Storage: 0.01M TBS (pH7.4) with 1% BSA, 0.02% Proclin300 and 50% Glycerol. Shipped at 4°C. Store at -20°C for one year. Avoid repeated freeze/thaw cycles.		
Background: The LIN-12/Notch family of transmembrane receptors is believed to play a central role in development by regulating cell fate decisions. Notch proteins have been found to be overexpressed or rearranged in human tumors. Ligands for Notch include Jagged, Jagged-2 and Delta. While blocking the differentiation of progenitor cells into the B cell lineage, Delta promotes the emergence of a population of cells with T cell/NK-cell characteristics. Delta is a membrane protein expressed in heart, pancreas, brain and muscle during gastrulation and early organogenesis, and in adult heart and lung.		
		Predicted MW.: 76 kDa
		Subcellular Location: Cell membrane

— VALIDATION IMAGES —

Sample: Lung (Mouse) Lysate at 40 ug Primary: Anti-DLL1 (bs-21907R) at 1/1000 dilution
Secondary: IRDye800CW Goat Anti-Rabbit IgG at 1/20000 dilution Predicted band size: 76 kD
Observed band size: 76 kD



Sample: Pancreas (Mouse) Lysate at 40 ug Primary: Anti-DLL1 (bs-21907R) at 1/1000 dilution Secondary: IRDye800CW Goat Anti-Rabbit IgG at 1/20000 dilution Predicted band size: 76 kD Observed band size: 76 kD