

RASL12 Rabbit pAb

Catalog Number: bs-19738R

Target Protein: RASL12

Concentration: 1mg/ml

Form: Liquid

Host: Rabbit

Clonality: Polyclonal

Isotype: IgG

Applications: IHC-P (1:100-500), IHC-F (1:100-500), IF (1:100-500)

Reactivity: Rat (predicted:Human, Mouse, Rabbit, Pig, Cow, Zebrafish, Horse)

Predicted MW: 30 kDa

Entrez Gene: 51265

Swiss Prot: Q8IVW4

Source: KLH conjugated synthetic peptide derived from human RASL12: 1-100/266.

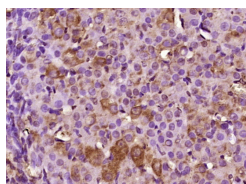
Purification: affinity purified by Protein A

Storage: 0.01M TBS (pH7.4) with 1% BSA, 0.02% Proclin300 and 50% Glycerol.

Shipped at 4°C. Store at -20°C for one year. Avoid repeated freeze/thaw cycles.

Background: A novel cyclin-dependent kinase-related molecule, NKIAMRE, has been identified that is thought to be a tumor suppressor locus. The NKIAMRE gene is located on chromosome 5q, a region that is often deleted in human acute leukemia and human myeloid dysplastic disorders.

VALIDATION IMAGES



Paraformaldehyde-fixed, paraffin embedded (Rat ovary); Antigen retrieval by boiling in sodium citrate buffer (pH6.0) for 15min; Block endogenous peroxidase by 3% hydrogen peroxide for 20 minutes; Blocking buffer (normal goat serum) at 37°C for 30min; Antibody incubation with (RASL12) Polyclonal Antibody, Unconjugated (bs-19738R) at 1:400 overnight at 4°C, followed by operating according to SP Kit(Rabbit) (sp-0023) instructions and DAB staining.