

bs-20546R**[Primary Antibody]****LRCH1 Rabbit pAb****Bioss**
ANTIBODIES

www.bioss.com.cn

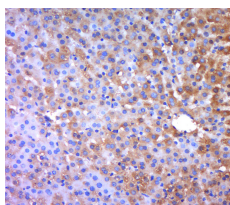
sales@bioss.com.cn

techsupport@bioss.com.cn

400-901-9800

— DATASHEET —

Host: Rabbit	Isotype: IgG	Applications: IHC-P (1:100-500) IHC-F (1:100-500) IF (1:100-500)
Clonality: Polyclonal		
GeneID: 23143	SWISS: Q9Y2L9	
Target: LRCH1		Reactivity: Rat (predicted: Human, Mouse)
Immunogen: KLH conjugated synthetic peptide derived from human LRCH1: 501-600/728.		
Purification: affinity purified by Protein A		Predicted MW.: 81 kDa
Concentration: 1mg/ml		Subcellular Location: Cytoplasm
Storage: Preservative: 0.02% Proclin300, Constituents: 1% BSA, 0.01M PBS, pH7.4. Shipped at 4°C. Store at -20°C for one year. Avoid repeated freeze/thaw cycles.		
Background: Members of the leucine-rich repeat family include LRCH1, LRCH2, LRCH3 and LRCH4. All family members contain one calponin-homology domain and nine leucine-rich repeats. The gene encoding LRCH1, also known as Neuronal protein 81 (NP81), has been suggested to be a possible gene locus for susceptibility to osteoarthritis, especially in women, though studies have shown conflicting results. LRCH1 is a 728 amino acid protein that is expressed at highest levels in cerebellum, with lower levels of expression in spinal cord, ovary, kidney and amygdala. In pigs, the gene encoding LRCH1 is one of 22 genes that is associated with leg and body conformation traits that affect productivity and health. There are two isoforms of LRCH1 that are expressed as a result of alternative splicing events.		

— VALIDATION IMAGES —

Paraformaldehyde-fixed, paraffin embedded (rat liver tissue); Antigen retrieval by boiling in sodium citrate buffer (pH6.0) for 15min; Block endogenous peroxidase by 3% hydrogen peroxide for 20 minutes; Blocking buffer (normal goat serum) at 37°C for 30min; Antibody incubation with (LRCH1) Polyclonal Antibody, Unconjugated (bs-20546R) at 1:400 overnight at 4°C, followed by a conjugated secondary (sp-0023) for 20 minutes and DAB staining.