

**bs-12916R****[ Primary Antibody ]****phospho-c-Kit (Tyr568 + Tyr570) Rabbit pAb****BioSS**  
ANTIBODIES

www.bioss.com.cn

sales@bioss.com.cn

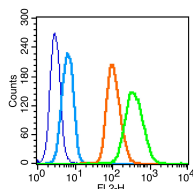
techsupport@bioss.com.cn

400-901-9800

## — DATASHEET —

<b>Host:</b> Rabbit	<b>Isotype:</b> IgG	<b>Applications:</b> Flow-Cyt (1µg/Test)
<b>Clonality:</b> Polyclonal		<b>Reactivity:</b> Human (predicted: Mouse, Rat, Pig, Sheep, Cow, Chicken, Dog, Horse)
<b>GeneID:</b> 3815	<b>SWISS:</b> P10721	
<b>Target:</b> c-Kit (Tyr568 + Tyr570)		<b>Predicted MW.:</b> 145 kDa
<b>Immunogen:</b> KLH conjugated synthesised phosphopeptide derived from human c-Kit around the phosphorylation site of Tyr568 + Tyr570: NN(p-Y)V(p-Y)ID.		<b>Subcellular Location:</b> Cell membrane ,Cytoplasm
<b>Purification:</b> affinity purified by Protein A		
<b>Concentration:</b> 1mg/ml		
<b>Storage:</b> 0.01M TBS (pH7.4) with 1% BSA, 0.02% Proclin300 and 50% Glycerol. Shipped at 4°C. Store at -20°C for one year. Avoid repeated freeze/thaw cycles.		
<b>Background:</b> c-Kit is a transmembrane tyrosine kinase encoded by the cKit proto oncogene. c-Kit acts to regulate a variety of biological responses including cell proliferation, apoptosis, chemotaxis and adhesion. Ligand binding to the extracellular domain leads to autophosphorylation on several tyrosine residues within the cytoplasmic domain, and activation. Mutations in c-Kit have been found to be important for tumor growth and progression in a variety of cancers including mast cell diseases, gastrointestinal stromal tumor, acute myeloid leukemia, Ewing sarcoma and lung cancer. Phosphorylation at tyrosine 721 of c-Kit allows binding and activation of PI3 kinase.		

## — VALIDATION IMAGES —



Blank control (blue line): K562 (fixed with 70% ethanol (overnight at 4°C) and then permeabilized with 0.1% PBS-Tween for 20 min at room temperature). Primary Antibody (green line): Rabbit Anti-phospho-c-Kit(Tyr568 + Tyr570)antibody (bs-12916R),Dilution: 1µg /10<sup>6</sup> cells; Isotype Control Antibody (orange line): Rabbit IgG . Secondary Antibody (white blue line): Goat anti-rabbit IgG-PE,Dilution: 1µg /test.