

TMEM59L Rabbit pAb

Catalog Number: bs-11648R

Target Protein: TMEM59L

Concentration: 1mg/ml

Form: Liquid

Host: Rabbit

Clonality: Polyclonal

Isotype: IgG

Applications: WB (1:500-2000)

Reactivity: Human (predicted: Mouse, Rat, Pig, Sheep, Cow, Dog, Horse)

Predicted MW: 35 kDa

Entrez Gene: 25789

Swiss Prot: Q9UK28

Source: KLH conjugated synthetic peptide derived from human TMEM59L: 251-342/342.

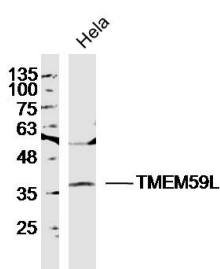
Purification: affinity purified by Protein A

Storage: 0.01M TBS (pH7.4) with 1% BSA, 0.02% Proclin300 and 50% Glycerol.

Shipped at 4°C. Store at -20°C for one year. Avoid repeated freeze/thaw cycles.

Background: BSMAP is a 342 amino acid type-I membrane glycoprotein that localizes to organelle membranes and belongs to the TMEM59 family. Expressed at high levels in brain tissue, BSMAP is thought to play a role in brain function and central nervous system activity. The gene encoding BSMAP maps to human chromosome 19, which consists of over 63 million bases, houses approximately 1,400 genes and is recognized for having the greatest gene density of the human chromosomes. It is the genetic home for a number of immunoglobulin (Ig) superfamily members, including the killer cell and leukocyte Ig-like receptors, a number of ICAMs, the CEACAM and PSG family and Fc receptors (FcRs).

VALIDATION IMAGES



Sample: HeLa Cell(Human)Lysate at 30 ug Primary: Anti-TMEM59L (bs-11648R) at 1/300 dilution Secondary: IRDye800CW Goat Anti-Rabbit IgG at 1/20000 dilution Predicted band size: 35kD Observed band size: 37kD