

bs-5422R**[Primary Antibody]****PP1C gamma Rabbit pAb****Bioss**
ANTIBODIES

www.bioss.com.cn

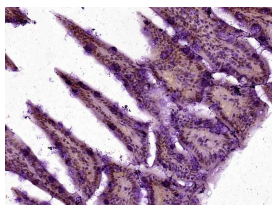
sales@bioss.com.cn

techsupport@bioss.com.cn

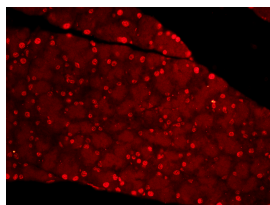
400-901-9800

— DATASHEET —

| | | |
|---|----------------------|--|
| Host: Rabbit | Isotype: IgG | Applications: IHC-P (1:100-500) IHC-F (1:100-500) IF (1:100-500) Reactivity: Mouse, Rat (predicted: Human, Cow, Chicken, Dog, Horse) Predicted MW.: 37 kDa Subcellular Location: Cytoplasm ,Nucleus |
| Clonality: Polyclonal | | |
| GeneID: 5501 | SWISS: P36873 | |
| Target: PP1C gamma | | |
| Immunogen: KLH conjugated synthetic peptide derived from human PP1G: 251-323/323. | | |
| Purification: affinity purified by Protein A | | |
| Concentration: 1mg/ml | | |
| Storage: 0.01M TBS (pH7.4) with 1% BSA, 0.02% Proclin300 and 50% Glycerol. Shipped at 4°C. Store at -20°C for one year. Avoid repeated freeze/thaw cycles. | | |
| Background: Protein phosphatase 1 (PP1) is essential for cell division, and participates in the regulation of glycogen metabolism, muscle contractility and protein synthesis. The protein is involved in regulation of ionic conductances and long term synaptic plasticity. It may play an important role in dephosphorylating substrates such as the postsynaptic density associated Ca (2+)/calmodulin dependent protein kinase II. PP1 comprises a catalytic subunit, PPP1CA, PPP1CB or PPP1CC (PP1C gamma), which is folded into its native form by inhibitor 2 and glycogen synthetase kinase 3, and then complexed to one or several targeting or regulatory subunits. PPP1R12A and PPP1R12B mediate binding to myosin. PPP1R3A, PPP1R3B, PPP1R3C and PPP1R3D mediate binding to glycogen. | | |

— VALIDATION IMAGES —

Paraformaldehyde-fixed, paraffin embedded (Mouse small intestine); Antigen retrieval by boiling in sodium citrate buffer (pH6.0) for 15min; Block endogenous peroxidase by 3% hydrogen peroxide for 20 minutes; Blocking buffer (normal goat serum) at 37°C for 30min; Antibody incubation with (PP1C gamma) Polyclonal Antibody, Unconjugated (bs-5422R) at 1:400 overnight at 4°C, followed by operating according to SP Kit(Rabbit) (sp-0023) instructions and DAB staining.



Paraformaldehyde-fixed, paraffin embedded (Rat pancreas); Antigen retrieval by boiling in sodium citrate buffer (pH6.0) for 15min; Block endogenous peroxidase by 3% hydrogen peroxide for 20 minutes; Blocking buffer (normal goat serum) at 37°C for 30min; Antibody incubation with (Protein phosphatase 1 catalytic subunit gamma isoform; PPP1CC) Polyclonal Antibody, Unconjugated (bs-5422R) at 1:400 overnight at 4°C, followed by a conjugated secondary antibody (bs-0295G-cy3) for 90 minutes.