

bs-12766R**[Primary Antibody]****VPS13D Rabbit pAb****BioSS**
ANTIBODIES

www.bioss.com.cn

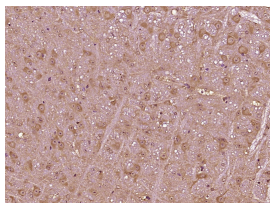
sales@bioss.com.cn

techsupport@bioss.com.cn

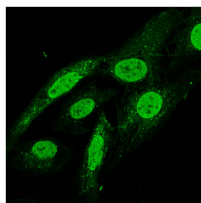
400-901-9800

— DATASHEET —

Host: Rabbit	Isotype: IgG	Applications: IHC-P (1:100-500) IHC-F (1:100-500) IF (1:100-500) ICC/IF (1:100-500) Reactivity: Human, Mouse (predicted: Rat, Rabbit, Sheep, Cow, Dog, Horse) Predicted MW.: 492 kDa Subcellular Location: Nucleus
Clonality: Polyclonal		
GeneID: 55187	SWISS: Q5THJ4	
Target: VPS13D		
Immunogen: KLH conjugated synthetic peptide derived from human VPS13D: 1651-1750/4388.		
Purification: affinity purified by Protein A		
Concentration: 1mg/ml		
Storage: 0.01M TBS (pH7.4) with 1% BSA, 0.02% Proclin300 and 50% Glycerol. Shipped at 4°C. Store at -20°C for one year. Avoid repeated freeze/thaw cycles.		
Background: This gene encodes a protein belonging to the vacuolar-protein- sorting-13 gene family. In yeast, vacuolar-protein-sorting-13 proteins are involved in trafficking of membrane proteins between the trans-Golgi network and the prevacuolar compartment. While several transcript variants may exist for this gene, the full-length natures of only two have been described to date. These two represent the major variants of this gene and encode distinct isoforms. [provided by RefSeq, Jul 2008]		

— VALIDATION IMAGES —

Paraformaldehyde-fixed, paraffin embedded (Mouse brain); Antigen retrieval by boiling in sodium citrate buffer (pH6.0) for 15min; Block endogenous peroxidase by 3% hydrogen peroxide for 20 minutes; Blocking buffer (normal goat serum) at 37°C for 30min; Antibody incubation with (VPS13D) Polyclonal Antibody, Unconjugated (bs-12766R) at 1:400 overnight at 4°C, followed by operating according to SP Kit(Rabbit) (sp-0023) instructions and DAB staining.



Cell: U-2OS cell; Primary Antibody: Rabbit Anti-VPS13D antibody (bs-12766R) at 1:100;
Secondary Antibody: Goat Anti-Rabbit IgG-FITC at 1:200.

— SELECTED CITATIONS —

- **[IF=6.8]** Jian Wang. et al. VPS13D affects epileptic seizures by regulating mitochondrial fission and autophagy in epileptic rats. GENES DIS. 2024 Mar;;101266 IHC,IF ;Rat,Mouse. 10.1016/j.gendis.2024.101266