

bs-13330R**[Primary Antibody]****Gemin 7 Rabbit pAb****BioSS**
ANTIBODIES

www.bioss.com.cn

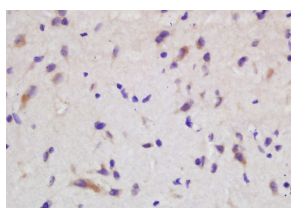
sales@bioss.com.cn

techsupport@bioss.com.cn

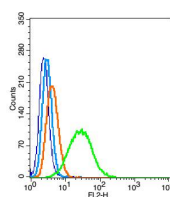
400-901-9800

— DATASHEET —

Host: Rabbit Clonality: Polyclonal GeneID: 79760 Target: Gemin 7 Immunogen: KLH conjugated synthetic peptide derived from human Gemin 7: 21-120/131. Purification: affinity purified by Protein A Concentration: 1mg/ml Storage: 0.01M TBS (pH7.4) with 1% BSA, 0.02% Proclin300 and 50% Glycerol. Shipped at 4°C. Store at -20°C for one year. Avoid repeated freeze/thaw cycles. Background: Gemin7 is a 131 amino acid protein encoded by the mouse gene Gemin7. Gemin7, along with Gemin6, is a significant component of the the large multiprotein human SMN complex. The SMN complex functions as an assembly machine for small nuclear ribonucleoproteins (snRNPs)-the major components of the spliceosome. The survival of motor neurons (SMN) protein, a product of the disease gene of the common neurodegenerative disease, spinal muscular atrophy, is also part of the SMN complex. Although Gemin6 and Gemin7 have no significant sequence similarity with Sm proteins, both adopt canonical Sm folds. Moreover, Gemin6 and Gemin7 exist as a heterodimer, and interact with each other via an interface similar to that which mediates interactions among the Sm proteins. The Gemin6/Gemin7 complex binds to Sm proteins and might help organize Sm proteins for formation of Sm rings on snRNA targets.	Isotype: IgG SWISS: Q9H840 Applications: IHC-P (1:100-500) IHC-F (1:100-500) IF (1:100-500) Flow-Cyt (1µg/Test) Reactivity: Human, Rat (predicted: Mouse, Cow, Chicken, Dog, Horse) Predicted MW.: 15 kDa Subcellular Location: Nucleus
--	--

— VALIDATION IMAGES —

Tissue/cell: rat brain tissue; 4% Paraformaldehyde-fixed and paraffin-embedded; Antigen retrieval: citrate buffer (0.01M, pH 6.0), Boiling bathing for 15min; Block endogenous peroxidase by 3% Hydrogen peroxide for 30min; Blocking buffer (normal goat serum,C-0005) at 37°C for 20 min; Incubation: Anti-Gemin 7 Polyclonal Antibody, Unconjugated(bs-13330R) 1:200, overnight at 4°C, followed by conjugation to the secondary antibody(SP-0023) and DAB(C-0010) staining



Blank control: HeLa(blue), the cells were fixed with 2% paraformaldehyde (10 min) and then permeabilized with ice-cold 90% methanol for 30 min on ice.. Isotype Control Antibody: Rabbit IgG(orange) ; Secondary Antibody: Goat anti-rabbit IgG-FITC(white blue), Dilution: 1:100 in 1 X PBS containing 0.5% BSA ; Primary Antibody Dilution: 1µg in 100 µL1X PBS containing 0.5% BSA(green).