

**bs-13328R****[ Primary Antibody ]****Gemin 4 Rabbit pAb****BioSS**  
**ANTIBODIES**

www.bioss.com.cn

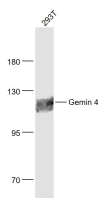
sales@bioss.com.cn

techsupport@bioss.com.cn

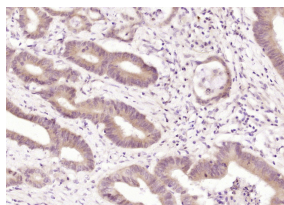
400-901-9800

**— DATASHEET —**

<b>Host:</b> Rabbit	<b>Isotype:</b> IgG	<b>Applications:</b> <b>WB</b> (1:500-2000) <b>IHC-P</b> (1:100-500) <b>IHC-F</b> (1:100-500) <b>IF</b> (1:100-500)  <b>Reactivity:</b> Human (predicted: Mouse, Rat, Rabbit, Dog)  <b>Predicted MW.:</b> 120 kDa  <b>Subcellular Location:</b> Cytoplasm
<b>Clonality:</b> Polyclonal		
<b>GeneID:</b> 50628	<b>SWISS:</b> P57678	
<b>Target:</b> Gemin 4		
<b>Immunogen:</b> KLH conjugated synthetic peptide derived from human Gemin 4: 251-350/1058.		
<b>Purification:</b> affinity purified by Protein A		
<b>Concentration:</b> 1mg/ml		
<b>Storage:</b> 0.01M TBS (pH7.4) with 1% BSA, 0.02% Proclin300 and 50% Glycerol. Shipped at 4°C. Store at -20°C for one year. Avoid repeated freeze/thaw cycles.		
<b>Background:</b> Gemin4 is a component of the SMN core complex which, while in the cytoplasm, plays an essential role in ribonucleoprotein (snRNP) assembly, including the biogenesis, delivery and recycling of snRNPs to the spliceosome. In the nucleus, where SMN is required for pre-mRNA splicing, Gemin4 concentrates next to coiled bodies in subnuclear structures called gems, that are highly enriched in splicosomal snRNPs, and in the nucleolus. Deletion or loss-of-function mutations in the SMN lead to the neurodegenerative disease spinal muscular atrophy (SMA). The human Gemin4 maps to chromosome 17p13.		

**— VALIDATION IMAGES —**

Sample: 293T(Human) Cell Lysate at 30 ug  
Primary: Anti- Gemin 4 (bs-13328R) at 1/1000  
dilution Secondary: IRDye800CW Goat Anti-  
Rabbit IgG at 1/20000 dilution Predicted band  
size: 120 kD Observed band size: 120 kD



Paraformaldehyde-fixed, paraffin embedded  
(human colon carcinoma); Antigen retrieval by  
boiling in sodium citrate buffer (pH6.0) for  
15min; Block endogenous peroxidase by 3%  
hydrogen peroxide for 20 minutes; Blocking  
buffer (normal goat serum) at 37°C for 30min;  
Antibody incubation with (Gemin 4) Polyclonal  
Antibody, Unconjugated (bs-13328R) at 1:200  
overnight at 4°C, followed by operating  
according to SP Kit(Rabbit) (sp-0023)  
instructions and DAB staining.