

bs-13141R**[Primary Antibody]****phospho-FANCD2 (Ser1404) Rabbit pAb****BioSS**
ANTIBODIES

www.bioss.com.cn

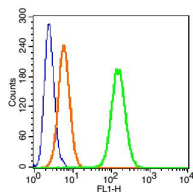
sales@bioss.com.cn

techsupport@bioss.com.cn

400-901-9800

— DATASHEET —

Host: Rabbit	Isotype: IgG	Applications: Flow-Cyt (1µg/Test)
Clonality: Polyclonal		Reactivity: Human (predicted: Rabbit, Pig, Sheep, Cow, Horse)
GeneID: 2177	SWISS: Q9BXW9	
Target: FANCD2 (Ser1404)		Predicted MW.: 162 kDa
Immunogen: KLH conjugated Synthesised phosphopeptide derived from human FANCD2 around the phosphorylation site of Ser1404: QN(p-S)QE.		Subcellular Location: Nucleus
Purification: affinity purified by Protein A		
Concentration: 1mg/ml		
Storage: 0.01M TBS (pH7.4) with 1% BSA, 0.02% Proclin300 and 50% Glycerol. Shipped at 4°C. Store at -20°C for one year. Avoid repeated freeze/thaw cycles.		
Background: Fanconi Anemia (FANC) is a human autosomal-recessive cancer susceptibility disorder characterized by congenital defects, progressive bone marrow failure, and cellular hypersensitivity to mitomycin C (MMC). The FANC subunit D2 protein is vital for cellular resistance to DNA cross-linking and the arrest of DNA synthesis after ionizing radiation. DNA damage activates the monoubiquitination of FANC D2, targeting nuclear foci containing the BRCA 1 protein.		

— VALIDATION IMAGES —

Blank control(blue): HeLa Cells(fixed with 2% paraformaldehyde (10 min) and then permeabilized with ice-cold 90% methanol for 30 min on ice). Primary Antibody: Rabbit Anti-phospho-FANCD2(Ser1404)/AF488 Conjugated antibody (bs-13141R/AF488), Dilution: 1µg in 100 µL 1X PBS containing 0.5% BSA; Isotype Control Antibody: Rabbit IgG/AF488 (orange) ,used under the same conditions.