

bs-13138R**[Primary Antibody]****FANCA Rabbit pAb****BioSS**
ANTIBODIES

www.bioss.com.cn

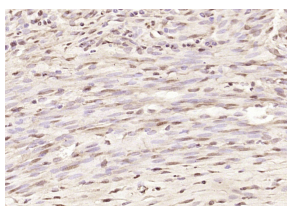
sales@bioss.com.cn

techsupport@bioss.com.cn

400-901-9800

— DATASHEET —

<p>Host: Rabbit</p> <p>Clonality: Polyclonal</p> <p>GeneID: 2175</p> <p>Target: FANCA</p> <p>Immunogen: KLH conjugated synthetic peptide derived from human FANCA: 461-560/1455.</p> <p>Purification: affinity purified by Protein A</p> <p>Concentration: 1mg/ml</p> <p>Storage: 0.01M TBS (pH7.4) with 1% BSA, 0.02% Proclin300 and 50% Glycerol. Shipped at 4°C. Store at -20°C for one year. Avoid repeated freeze/thaw cycles.</p> <p>Background: Fanconi anemia (FA) is an autosomal recessive disorder characterized by bone marrow failure, birth defects and chromosomal instability. At the cellular level, FA is characterized by spontaneous chromosomal breakage and a unique hypersensitivity to DNA cross-linking agents. At least eight complementation groups (A-G) have been identified and six FA genes (for subtypes A, C, D2, E, F and G) have been cloned. The FA proteins lack sequence homologies or motifs that could point to a molecular function. The cellular accumulation of FA proteins, including FANCA and FANCG, is subject to regulation by TNF alpha signaling. Phosphorylation of FANCA (Fanconi anemia complementation group) proteins is thought to be important for the function of the FA pathway. FANCA, also known as FACA and FANCH, associates with the Brm-related gene 1 (BRG1) product, a subunit of the SWI/SNF complex which remodels chromatin structure through a DNA-dependent ATPase activity. FANCA is mainly expressed in lymphoid tissues, testis and ovary. The amino-terminal region of the FANCA protein is required for FANCG binding, FANCC binding, nuclear localization and functional activity of the complex. The human FANCA gene maps to chromosome 16q24.3 and encodes a 1,455 amino acid protein.</p>	<p>Applications: IHC-P (1:100-500) IHC-F (1:100-500) IF (1:100-500)</p> <p>Reactivity: Rat (predicted: Human, Mouse, Rabbit, Chicken)</p> <p>Predicted MW.: 160 kDa</p> <p>Subcellular Location: Cytoplasm ,Nucleus</p>
--	--

— VALIDATION IMAGES —

Paraformaldehyde-fixed, paraffin embedded (rat uterus); Antigen retrieval by boiling in sodium citrate buffer (pH6.0) for 15min; Block endogenous peroxidase by 3% hydrogen peroxide for 20 minutes; Blocking buffer (normal goat serum) at 37°C for 30min; Antibody incubation with (FANCA) Polyclonal Antibody, Unconjugated (bs-13138R) at 1:200 overnight at 4°C, followed by operating according to SP Kit(Rabbit) (sp-0023) instructions and DAB staining.