

**bs-13162R****[ Primary Antibody ]****Ficolin 2 Rabbit pAb****BioSS**  
**ANTIBODIES**

www.bioss.com.cn

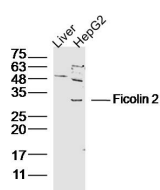
sales@bioss.com.cn

techsupport@bioss.com.cn

400-901-9800

**— DATASHEET —**

<b>Host:</b> Rabbit	<b>Isotype:</b> IgG	<b>Applications:</b> WB (1:500-2000)
<b>Clonality:</b> Polyclonal		<b>Reactivity:</b> Human (predicted: Mouse, Rat)
<b>GeneID:</b> 2220	<b>SWISS:</b> Q15485	
<b>Target:</b> Ficolin 2		<b>Predicted MW.:</b> 31 kDa
<b>Immunogen:</b> KLH conjugated synthetic peptide derived from human Ficolin 2/Ficolin B: 231-313/313.		<b>Subcellular Location:</b> Secreted
<b>Purification:</b> affinity purified by Protein A		
<b>Concentration:</b> 1mg/ml		
<b>Storage:</b> 0.01M TBS (pH7.4) with 1% BSA, 0.02% Proclin300 and 50% Glycerol. Shipped at 4°C. Store at -20°C for one year. Avoid repeated freeze/thaw cycles.		
<b>Background:</b> Ficolin B is the designation in mouse and rat of a protein also known as L-ficolin, ficolin-2, collagen/fibrinogen domain-containing protein 2, serum lectin p35, EBP-37 or hucolin. Ficolin B is a 313 amino acid member of the ficolin lectin family. It is a secreted innate immunity pattern recognition molecule expressed in liver and plasma that forms a disulfide-linked homopolymer. This extensive N-terminal disulfide bridge formation can lead to a functional dodecamer polypeptide. Ficolin B binds to DNA ligands expressed by late apoptotic and necrotic cells to increase attachment and engulfment. Variation in ficolin B concentrations amongst individuals is associated with polymorphisms in the promoter and structural portion of the FCN2 gene. In patients with Behçet's disease (BD), there exists a significant difference in allele frequency for FCN2 gene single nucleotide polymorphisms (SNPs) within the -557 and -64 promoter sites within HLA-B51 positive and HLA-B51 negative subgroups.		

**— VALIDATION IMAGES —**

Sample: Liver (Mouse) Lysate at 40 ug HepG2  
(human) Lysate at 40 ug Primary: Anti- Ficolin 2  
(bs-13162R) at 1/300 dilution Secondary:  
IRDye800CW Goat Anti-Rabbit IgG at 1/20000  
dilution Predicted band size: 31kD Observed  
band size: 31kD