

[Primary Antibody]

hydrogen exchanger 3 Rabbit pAb



BioSS
ANTIBODIES

www.bioss.com.cn

sales@bioass.com.cn

techsupport@bioss.com.cn

400-901-9800

— DATASHEET

Host: Rabbit

Isotype: IgG

Clonality: Polyclonal

GeneID: 6550

SWISS: P48764

Target: hydrogen exchanger 3

Immunogen: KLH conjugated synthetic peptide derived from human hydrogen exchanger 3 : 451-550/834.

Purification: affinity purified by Protein A

Concentration: 1mg/ml

Storage: 0.01M TBS (pH7.4) with 1% BSA, 0.02% Proclin300 and 50% Glycerol.

Shipped at 4°C. Store at -20°C for one year. Avoid repeated freeze/thaw cycles.

Background: NHE-3 are integral membrane proteins that are expressed in most mammalian tissues, where they regulate intracellular pH and cell volume. NHEs mediate the transport of hydrogen (H^+) ions out of cells in exchange for extracellular sodium (Na^+) ions. While NHE-1 is ubiquitously expressed, the NHE isoforms 2-8 have distinct tissue- and cell type-dependent expression and inhibitory characteristics. NHE-3 localizes to the apical membrane of renal proximal tubules where it is responsible for most of the sodium transport and fluid reabsorption. NHE-3 translocates to internal pools where it mediates natriuresis when blood pressure increases abruptly. NHE-3 is also expressed in the stomach and functions to protect the mucosa by secreting protons that diffuse into the mucous cells.

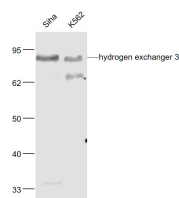
Applications: WB (1:500-2000)

Reactivity: Human (predicted: Mouse, Rat, Rabbit, Pig, Sheep, Cow, Horse)

Predicted
MW.: 93 kDa

Subcellular Location: Cell membrane

— VALIDATION IMAGES



Sample: SiHa(Human) Cell Lysate at 30 ug
K562(Human) Cell Lysate at 30 ug Primary: Anti-
hydrogen exchanger 3 (bs-22546R) at 1/1000
dilution Secondary: IRDye800CW Goat Anti-
Rabbit IgG at 1/20000 dilution Predicted band
size: 80 kD Observed band size: 80 kD