

bs-22051R**[Primary Antibody]****BioSS**
ANTIBODIES

www.bioss.com.cn

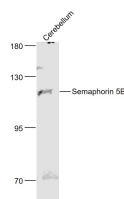
sales@bioss.com.cn

techsupport@bioss.com.cn

400-901-9800

Semaphorin 5B Rabbit pAb**— DATASHEET —**

Host: Rabbit	Isotype: IgG	Applications: WB (1:500-2000)
Clonality: Polyclonal		Reactivity: Mouse (predicted: Human, Rat, Rabbit, Pig, Sheep, Cow, Chicken, Dog)
GeneID: 54437	SWISS: Q9P283	
Target: Semaphorin 5B		Predicted MW.: 126 kDa
Immunogen: KLH conjugated synthetic peptide derived from human Semaphorin 5B : 201-300/1155.		Subcellular Location: Cell membrane
Purification: affinity purified by Protein A		
Concentration: 1mg/ml		
Storage: 0.01M TBS (pH7.4) with 1% BSA, 0.02% Proclin300 and 50% Glycerol. Shipped at 4°C. Store at -20°C for one year. Avoid repeated freeze/thaw cycles.		
Background: Semaphorins are a family of cell surface and secreted proteins that are conserved from insects to humans. Members of this family of proteins are approximately 750 amino acids in length (including signal sequences) and are defined by a conserved extracellular "semaphorin" domain of approximately 500 amino acids containing 14-16 cysteines, blocks of conserved sequences and no obvious repeats. Secreted and cell-bound semaphorins chemically attract and repel the growth of neural axons, guiding the development of intricate networks of neural tissue. SEMA5B (semaphorin-5B), also known as SEMAG, is a 1151 amino acid member of the semaphorin family. Localized to the membrane, SEMA5B is a single-pass type III protein that functions to convey positive axonal guidance cues and can induce calpain-mediated cleavage of calcineurin. Three isoforms exist due to alternative splicing events.		

— VALIDATION IMAGES —

Sample: Cerebellum (Mouse) Lysate at 40 ug
Primary: Anti- Semaphorin 5B (bs-22051R) at 1/1000 dilution
Secondary: IRDye800CW Goat Anti-Rabbit IgG at 1/20000 dilution
Predicted band size: 126 kD
Observed band size: 126 kD