

bsm-42106M**[Primary Antibody]****ESM1 Mouse mAb****Bioss**
ANTIBODIES

www.bioss.com.cn

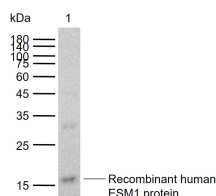
sales@bioss.com.cn

techsupport@bioss.com.cn

400-901-9800

— DATASHEET —

Host: Mouse	Isotype: IgG	Applications: WB (1:500-2000) Reactivity: Human (predicted: Mouse, Rat) Predicted MW.: 20 kDa Subcellular Location: Secreted
Clonality: Monoclonal	CloneNo.: 1A2	
GeneID: 11082	SWISS: Q9NQ30	
Target: ESM1		
Immunogen: Recombinant human ESM1 protein: 22-184/184.		
Purification: affinity purified by Protein A		
Concentration: 1mg/ml		
Storage: Size : 50ul/100ul/200ul 0.01M TBS (pH7.4) with 1% BSA, 0.02% Proclin300 and 50% Glycerol. Size : 200ug (PBS only) 0.01M PBS Shipped at 4°C. Store at -20°C for one year. Avoid repeated freeze/thaw cycles.		
Background: ESM1 is a secreted dermatan sulfate proteoglycan which is predominantly expressed in the endothelial cells in human lung and kidney tissues. Expression of ESM1 is regulated by cytokines. ESM1 may have a role in lung endothelial cell-leukocyte interactions. The transcript contains multiple polyadenylation and mRNA instability signals. Two transcript variants encoding different isoforms have been found for this gene.		

— VALIDATION IMAGES —

Sample: Lane 1: Recombinant human ESM1 protein, N-His(bs-42106P) Primary: Anti-ESM1 (bsm-42106M) at 1/1000 dilution Secondary: IRDye800CW Goat Anti-Mouse IgG at 1/20000 dilution Predicted band size: 20 kDa Observed band size: 17 kDa