

bs-12755R**[Primary Antibody]****POLD3 Rabbit pAb****Bioss**
ANTIBODIES

www.bioss.com.cn

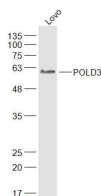
sales@bioss.com.cn

techsupport@bioss.com.cn

400-901-9800

— DATASHEET —

Host: Rabbit	Isotype: IgG	Applications: WB (1:500-2000)
Clonality: Polyclonal		Reactivity: Human (predicted: Mouse, Rat, Rabbit, Pig, Sheep, Cow, Dog, Horse)
GeneID: 10714	SWISS: Q15054	Predicted MW.: 51 kDa
Target: POLD3		Subcellular Location: Nucleus
Immunogen: KLH conjugated synthetic peptide derived from human POLD3: 351-450/466.		
Purification: affinity purified by Protein A		
Concentration: 1mg/ml		
Storage: 0.01M TBS (pH7.4) with 1% BSA, 0.02% Proclin300 and 50% Glycerol. Shipped at 4°C. Store at -20°C for one year. Avoid repeated freeze/thaw cycles.		
Background: This gene encodes the 66-kDa subunit of DNA polymerase delta. DNA polymerase delta possesses both polymerase and 3' to 5' exonuclease activity and plays a critical role in DNA replication and repair. The encoded protein plays a role in regulating the activity of DNA polymerase delta through interactions with other subunits and the processivity cofactor proliferating cell nuclear antigen (PCNA). Alternatively spliced transcript variants have been observed for this gene. [provided by RefSeq, Mar 2012]		

— VALIDATION IMAGES —

Sample: Lovo(Human) Cell Lysate at 40 ug
Primary: Anti-POLD3 (bs-12755R) at 1/300
dilution Secondary: IRDye800CW Goat Anti-
Rabbit IgG at 1/20000 dilution Predicted band
size: 51 kD Observed band size: 51 kD