

bs-4827R**[Primary Antibody]****Bioss**
ANTIBODIES

www.bioss.com.cn

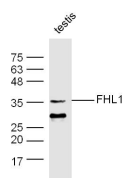
sales@bioss.com.cn

techsupport@bioss.com.cn

400-901-9800

FHL1 Rabbit pAb**— DATASHEET —**

Host: Rabbit	Isotype: IgG	Applications: WB (1:500-2000)
Clonality: Polyclonal		
GeneID: 2273	SWISS: Q13642	
Target: FHL1		
Immunogen: KLH conjugated synthetic peptide derived from human FHL1: 151-250/323.		
Purification: affinity purified by Protein A		Reactivity: Mouse (predicted: Human, Rat, Pig, Sheep, Cow, Dog)
Concentration: 1mg/ml		Predicted MW.: 35 kDa
Storage: 0.01M TBS (pH7.4) with 1% BSA, 0.02% Proclin300 and 50% Glycerol. Shipped at 4°C. Store at -20°C for one year. Avoid repeated freeze/thaw cycles.		Subcellular Location: Cytoplasm ,Nucleus
Background: This gene encodes a member of the four-and-a-half-LIM-only protein family. Family members contain two highly conserved, tandemly arranged, zinc finger domains with four highly conserved cysteines binding a zinc atom in each zinc finger. Expression of these family members occurs in a cell- and tissue-specific mode and these proteins are involved in many cellular processes. Mutations in this gene have been found in patients with Emery-Dreifuss muscular dystrophy. Multiple alternately spliced transcript variants which encode different protein isoforms have been described.[provided by RefSeq, Nov 2009]		

— VALIDATION IMAGES —

Sample: testis (Mouse) Lysate at 40 ug Primary:

Anti-FHL1 (bs-4827R) at 1/300 dilution

Secondary: IRDye800CW Goat Anti-Rabbit IgG at

1/20000 dilution Predicted band size: 35 kD

Observed band size: 35 kD