

bs-14041R

[Primary Antibody]

CR16 Rabbit pAb

Bioss
ANTIBODIES

www.bioss.com.cn

sales@bioss.com.cn

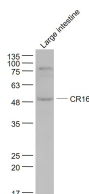
techsupport@bioss.com.cn

400-901-9800

— DATASHEET —

Host: Rabbit	Isotype: IgG	Applications: WB (1:500-2000)
Clonality: Polyclonal		Reactivity: Mouse (predicted: Human, Rat, Dog, Horse)
GeneID: 644150	SWISS: A6NGB9	
Target: CR16		Predicted MW.: 49 kDa
Immunogen: KLH conjugated synthetic peptide derived from human CR16: 51-150/483.		Subcellular Location: Cytoplasm
Purification: affinity purified by Protein A		
Concentration: 1mg/ml		
Storage: 0.01M TBS (pH7.4) with 1% BSA, 0.02% Proclin300 and 50% Glycerol. Shipped at 4°C. Store at -20°C for one year. Avoid repeated freeze/thaw cycles.		
Background: CR16 is a 483 amino acid proline-rich cytoplasmic protein that is thought to regulate cytoskeletal organization. A member of both the verprolin and Wiskott-Aldrich syndrome protein (WASP)-interacting protein (WIP) families, CR16 colocalizes with N-WASP (Neuronal Wiskott-Aldrich syndrome protein) in tips of growth cone filopodia, primary hippocampal neurons and Sertoli cell-spermatid junctions. CR16 and N-WASP functionally interact to influence spermatogenesis. CR16 is predominantly expressed in brain and testis, contains one WH2 domain, a KLKR motif, three profilin-binding motifs and is encoded by a gene that maps to human chromosome 7p15.1.		

— VALIDATION IMAGES —



Sample: Large intestine (Mouse) Lysate at 40 ug

Primary: Anti- CR16 (bs-14041R) at 1/1000

dilution Secondary: IRDye800CW Goat Anti-

Rabbit IgG at 1/20000 dilution Predicted band

size: 49kD Observed band size: 49 kD