

bs-14038R

[Primary Antibody]

CPSF6 Rabbit pAb

BioSS
ANTIBODIES

www.bioss.com.cn

sales@bioss.com.cn

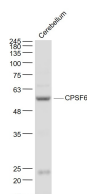
techsupport@bioss.com.cn

400-901-9800

— DATASHEET —

Host: Rabbit	Isotype: IgG	Applications: WB (1:500-2000)
Clonality: Polyclonal		
GeneID: 11052	SWISS: Q16630	
Target: CPSF6		
Immunogen: KLH conjugated synthetic peptide derived from human CPSF6: 121-220/551.		
Purification: affinity purified by Protein A		
Concentration: 1mg/ml		
Storage: 0.01M TBS (pH7.4) with 1% BSA, 0.02% Proclin300 and 50% Glycerol. Shipped at 4°C. Store at -20°C for one year. Avoid repeated freeze/thaw cycles.		Reactivity: Mouse (predicted: Human, Rat, Sheep, Cow, Chicken, Dog)
Background: The protein encoded by this gene is one subunit of a cleavage factor required for 3' RNA cleavage and polyadenylation processing. The interaction of the protein with the RNA is one of the earliest steps in the assembly of the 3' end processing complex and facilitates the recruitment of other processing factors. The cleavage factor complex is composed of four polypeptides. This gene encodes the 68kD subunit. It has a domain organization reminiscent of spliceosomal proteins. [provided by RefSeq, Jul 2008]		Predicted MW.: 59 kDa
		Subcellular Location: Nucleus

— VALIDATION IMAGES —



Sample: Cerebellum (Mouse) Lysate at 40 ug
Primary: Anti- CPSF6 (bs-14038R) at 1/1000
dilution Secondary: IRDye800CW Goat Anti-
Rabbit IgG at 1/20000 dilution Predicted band
size: 59 kD Observed band size: 59 kD