

**bs-14036R****[ Primary Antibody ]****CPSF2 Rabbit pAb****Bioss**  
ANTIBODIES

www.bioss.com.cn

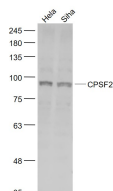
sales@bioss.com.cn

techsupport@bioss.com.cn

400-901-9800

**— DATASHEET —**

<b>Host:</b> Rabbit	<b>Isotype:</b> IgG	<b>Applications:</b> WB (1:500-2000)
<b>Clonality:</b> Polyclonal		<b>Reactivity:</b> Human (predicted: Mouse, Rat, Rabbit, Cow, Chicken, Horse)
<b>GeneID:</b> 53981	<b>SWISS:</b> Q9P2I0	<b>Predicted MW.:</b> 88 kDa
<b>Target:</b> CPSF2		<b>Subcellular Location:</b> Nucleus
<b>Immunogen:</b> KLH conjugated synthetic peptide derived from human CPSF2: 101-200/782.		
<b>Purification:</b> affinity purified by Protein A		
<b>Concentration:</b> 1mg/ml		
<b>Storage:</b> 0.01M TBS (pH7.4) with 1% BSA, 0.02% Proclin300 and 50% Glycerol. Shipped at 4°C. Store at -20°C for one year. Avoid repeated freeze/thaw cycles.		
<b>Background:</b> CPSF contains four subunits and localizes to the nucleoplasm where it recognizes the AAUAAA signal in pre-mRNA and interacts with other proteins to facilitate RNA cleavage and poly(A) synthesis (1,4,5). The human CPSF2 gene maps to chromosome 14q32.12 and encodes the second largest subunit of cleavage and polyadenylation specificity factor. U1 snRNP-A protein (U1A) interacts with and affects the activity of CPSF by stabilizing the interaction of CPSF with the AAUAAA-containing RNAs to increase the efficiency of polyadenylation .		

**— VALIDATION IMAGES —**

Sample: HeLa(Human) Cell Lysate at 30 ug  
SiHa(Human) Cell Lysate at 30 ug Primary: Anti-CPSF2 (bs-14036R) at 1/1000 dilution Secondary: IRDye800CW Goat Anti-Rabbit IgG at 1/20000 dilution Predicted band size: 88 kD Observed band size: 88 kD