

**bs-14025R****[ Primary Antibody ]****CPNE2 Rabbit pAb****Bioss**  
**ANTIBODIES**

www.bioss.com.cn

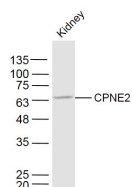
sales@bioss.com.cn

techsupport@bioss.com.cn

400-901-9800

**— DATASHEET —**

<b>Host:</b> Rabbit	<b>Isotype:</b> IgG	<b>Applications:</b> WB (1:500-2000)
<b>Clonality:</b> Polyclonal		<b>Reactivity:</b> Mouse (predicted: Human, Rat, Rabbit, Pig, Sheep, Cow, Chicken, Dog)
<b>GeneID:</b> 221184	<b>SWISS:</b> Q96FN4	
<b>Target:</b> CPNE2		<b>Predicted MW.:</b> 61 kDa
<b>Immunogen:</b> KLH conjugated synthetic peptide derived from human CPNE2: 81-180/548.		<b>Subcellular Location:</b> Cell membrane
<b>Purification:</b> affinity purified by Protein A		
<b>Concentration:</b> 1mg/ml		
<b>Storage:</b> 0.01M TBS (pH7.4) with 1% BSA, 0.02% Proclin300 and 50% Glycerol. Shipped at 4°C. Store at -20°C for one year. Avoid repeated freeze/thaw cycles.		
<b>Background:</b> Calcium-dependent membrane-binding proteins may regulate molecular events at the interface of the cell membrane and cytoplasm. This gene is one of several genes that encode a calcium-dependent protein containing two N-terminal type II C2 domains and an integrin A domain-like sequence in the C-terminus. Sequence analysis identified multiple alternatively spliced transcript variants but their full-length natures could not be determined. [provided by RefSeq, Jul 2008]		

**— VALIDATION IMAGES —**

Sample: Kidney (Mouse) Lysate at 40 ug Primary:  
Anti- CPNE2 (bs-14025R) at 1/300 dilution  
Secondary: IRDye800CW Goat Anti-Rabbit IgG at  
1/20000 dilution Predicted band size: 61 kD  
Observed band size: 61 kD