

bs-14024R**[Primary Antibody]****CPNE1 Rabbit pAb****BioSS**
ANTIBODIES

www.bioss.com.cn

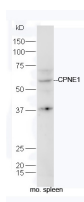
sales@bioss.com.cn

techsupport@bioss.com.cn

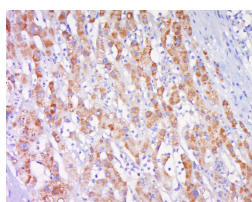
400-901-9800

— DATASHEET —

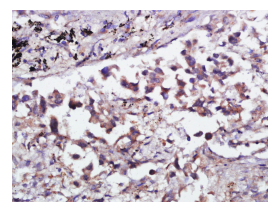
Host: Rabbit Clonality: Polyclonal GeneID: 8904 Target: CPNE1 Immunogen: KLH conjugated synthetic peptide derived from human CPNE1: 1-120/537. Purification: affinity purified by Protein A Concentration: 1mg/ml Storage: 0.01M TBS (pH7.4) with 1% BSA, 0.02% Proclin300 and 50% Glycerol. Shipped at 4°C. Store at -20°C for one year. Avoid repeated freeze/thaw cycles. Background: Copine I is a member of the copine family of evolutionarily conserved, soluble, calcium-dependent, membrane-binding proteins. Members of the copine family are involved in signal transduction and membrane trafficking. Copine I is ubiquitously expressed and contains two N-terminal C2 domains and one C-terminal VWFA (von Willebrand factor A) domain, which is also referred to as the A domain or the core domain. As is characteristic of the copine family, copine I functions in membrane trafficking and is capable of binding phospholipids in a calcium-dependent manner. Copine I is also able to bind liposomes. Via its VWFA domain, copine I directly interacts with the ubiquitin-conjugating enzyme, UBC12, and may play a role in the regulation of TNF alpha-signaling.	Isotype: IgG SWISS: Q99829	Applications: WB (1:500-2000) IHC-P (1:100-500) IHC-F (1:100-500) IF (1:100-500) Reactivity: Human, Mouse (predicted: Rat, Pig, Sheep, Cow) Predicted MW.: 59 kDa Subcellular Location: Cell membrane
--	---	--

— VALIDATION IMAGES —

Protein: spleen(mouse) lysate at 40ug; Primary: rabbit Anti-CPNE1 (bs-14024R) at 1:300; Secondary: HRP conjugated Goat-Anti-rabbit IgG(bs-0295G-HRP) at 1: 5000; Predicted band size: 59 kD Observed band size: 59 kD



Tissue/cell: human liver carcinoma; 4% Paraformaldehyde-fixed and paraffin-embedded; Antigen retrieval: citrate buffer (0.01M, pH 6.0), Boiling bathing for 15min; Block endogenous peroxidase by 3% Hydrogen peroxide for 30min; Blocking buffer (normal goat serum, C-0005) at 37°C for 20 min; Incubation: Anti-CPNE1 Polyclonal Antibody, Unconjugated(bs-14024R) 1:500, overnight at 4°C, followed by conjugation to the secondary antibody(SP-0023) and DAB(C-0010) staining



Tissue/cell: human lung carcinoma; 4% Paraformaldehyde-fixed and paraffin-embedded; Antigen retrieval: citrate buffer (0.01M, pH 6.0), Boiling bathing for 15min; Block endogenous peroxidase by 3% Hydrogen peroxide for 30min; Blocking buffer (normal goat serum, C-0005) at 37°C for 20 min; Incubation: Anti-CPNE1 Polyclonal Antibody, Unconjugated(bs-14024R) 1:400, overnight at 4°C, followed by conjugation to the secondary antibody(SP-0023) and DAB(C-0010) staining

— SELECTED CITATIONS —

- **[IF=4.7]** Sheng Bo. et al. Copine 1 predicts poor clinical outcomes by promoting M2 macrophage activation in ovarian cancer. CARCINOGENESIS. 2023 Sep;; IHC ;Human. 37747823