
FLVCR2 Rabbit pAb

Catalog Number: bs-16147R

Target Protein: FLVCR2

Concentration: 1mg/ml

Form: Liquid

Host: Rabbit

Clonality: Polyclonal

Isotype: IgG

Applications: WB (1:500-2000)

Reactivity: Mouse (predicted:Human, Rat)

Predicted MW: 57 kDa

Subcellular: Cell membrane

Locations:

Entrez Gene: 55640

Swiss Prot: Q9UPI3

Source: KLH conjugated synthetic peptide derived from human FLVCR2: 321-420/526.

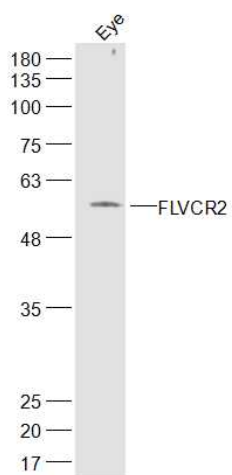
Purification: affinity purified by Protein A

Storage: 0.01M TBS (pH7.4) with 1% BSA, 0.02% Proclin300 and 50% Glycerol.

Shipped at 4°C. Store at -20°C for one year. Avoid repeated freeze/thaw cycles.

Background: This gene encodes a member of the major facilitator superfamily. The encoded transmembrane protein is a calcium transporter. Unlike the related protein feline leukemia virus subgroup C receptor 1, the protein encoded by this locus does not bind to feline leukemia virus subgroup C envelope protein. The encoded protein may play a role in development of brain vascular endothelial cells, as mutations at this locus have been associated with proliferative vasculopathy and hydranencephaly-hydrocephaly syndrome. Alternatively spliced transcript variants have been described.[provided by RefSeq, Aug 2010]

VALIDATION IMAGES



Sample: Eye (Mouse) Lysate at 40 ug Primary: Anti-FLVCR2 (bs-16147R) at 1/300 dilution Secondary: IRDye800CW Goat Anti-Rabbit IgG at 1/20000 dilution Predicted band size: 57 kD Observed band size: 57 kD