
NLGN2 Rabbit pAb

Catalog Number: bs-11098R

Target Protein: NLGN2

Concentration: 1mg/ml

Form: Liquid

Host: Rabbit

Clonality: Polyclonal

Isotype: IgG

Applications: Flow-Cyt (1µg/Test)

Reactivity: Human (predicted: Mouse, Rat, Rabbit, Pig, Cow, Dog, Horse)

Predicted MW: 90 kDa

Subcellular: Cell membrane

Locations:

Entrez Gene: 57555

Swiss Prot: Q8NFZ4

Source: KLH conjugated synthetic peptide derived from human NLGN1: 251-350/835.

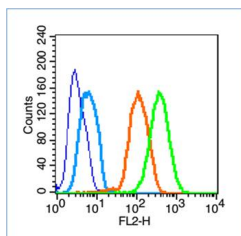
Purification: affinity purified by Protein A

Storage: 0.01M TBS (pH7.4) with 1% BSA, 0.02% Proclin300 and 50% Glycerol.

Shipped at 4°C. Store at -20°C for one year. Avoid repeated freeze/thaw cycles.

Background: Neuroligins are a family of plasma membrane proteins that possess an N-terminal hydrophobic domain, a large esterase homology domain, a single transmembrane region, a short cytoplasmic domain, and an EF-hand binding domain (1,2). Members of the neuroligin family include Neuroligin 1, Neuroligin 2 and Neuroligin 3. Neuroligins are expressed in excitatory neuronal synaptic clefts. Neuroligins play a role in the formation and remodeling of CNS synapses by binding to b-neurexins, a family of neuronal cell surface proteins. Neuroexin 1b binds to the EF-hand domain of Neuroligin 1 and requires calcium ion. Neuroligins also bind to PSD-95, which may recruit ion channels and neurotransmitter receptors to the synapses.

VALIDATION IMAGES



Blank control (blue line): U251 (fixed with 70% ethanol for 5 min at -20°C). Primary Antibody (green line): Rabbit Anti- Neuroligin 2 antibody (bs-11098R), Dilution: 1µg /10⁶ cells; Isotype Control Antibody (orange line): Rabbit IgG . Secondary Antibody (white blue line): Goat anti-rabbit IgG-PE,Dilution: 1µg /test.