

bs-2017R

[Primary Antibody]

14-3-3 family protein Rabbit pAb

Bioss
ANTIBODIES

www.bioss.com.cn

sales@bioss.com.cn

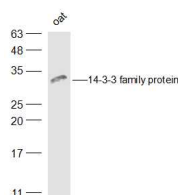
techsupport@bioss.com.cn

400-901-9800

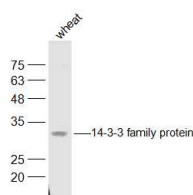
— DATASHEET —

Host: Rabbit	Isotype: IgG	Applications: WB (1:500-2000)
Clonality: Polyclonal		Reactivity: Wheat, Oat, Apple
Target: 14-3-3 family protein		
Immunogen: KLH conjugated synthetic peptide derived from Malus domestica 14-3-3 family protein: 151-261/261.		
Purification: affinity purified by Protein A		Predicted MW.: 30 kDa
Concentration: 1mg/ml		
Storage: 0.01M TBS (pH7.4) with 1% BSA, 0.02% Proclin300 and 50% Glycerol. Shipped at 4°C. Store at -20°C for one year. Avoid repeated freeze/thaw cycles.		

— VALIDATION IMAGES —



Sample: Oat Lysate at 40 ug Primary: Anti-14-3-3 family protein (bs-2017R) at 1/500 dilution
Secondary: IRDye800CW Goat Anti-Rabbit IgG at 1/20000 dilution Predicted band size: 30 kD
Observed band size: 30 kD



Sample: Wheat Lysate at 40 ug Primary: Anti-14-3-3 family protein (bs-2017R) at 1/500 dilution
Secondary: IRDye800CW Goat Anti-Rabbit IgG at 1/20000 dilution Predicted band size: 30 kD Observed band size: 30 kD