

bs-23293R

[Primary Antibody]

CBP Tag Rabbit pAb

BioSS
ANTIBODIES

www.bioss.com.cn

sales@bioss.com.cn

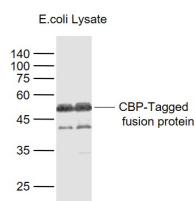
techsupport@bioss.com.cn

400-901-9800

— DATASHEET —

Host: Rabbit	Isotype: IgG	Applications: WB (1:1000-5000) ELISA (1:1000-5000)
Clonality: Polyclonal		Reactivity: Species independent
Target: CBP Tag		
Immunogen: KLH conjugated synthetic peptide CBP Tag: KRRWKKNFIAVSAANRFKKISSSGAL.		
Purification: affinity purified by Protein A		
Concentration: 1mg/ml		
Storage: 0.01M TBS (pH7.4) with 1% BSA, 0.02% Proclin300 and 50% Glycerol. Shipped at 4°C. Store at -20°C for one year. Avoid repeated freeze/thaw cycles.		
Background: CBP tag is a calmodulin-binding peptide, KRRWKKNFIAVSAANRFKKISSSGAL, derived from skeletal/cardiac muscle myosin light chain kinase 2.		

— VALIDATION IMAGES —



Sample: Lane 1: CBP-Tagged Fusion Protein
Overexpression E.coli Lysate (Cat#: bs-41403P)
at 2ug Lane 2: CBP-Tagged Fusion Protein
Overexpression E.coli Lysate (Cat#: bs-41403P)
at 4ug Primary: Anti-CBP-Tag (bs-23293R) at
1/1000 dilution Secondary: IRDye800CW Goat
Anti-Rabbit IgG at 1/20000 dilution Predicted
band size: 51 kD Observed band size: 51 kD