

bs-6702R**[Primary Antibody]****TRPC3 Rabbit pAb****Bioss**
ANTIBODIES

www.bioss.com.cn

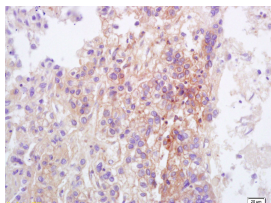
sales@bioss.com.cn

techsupport@bioss.com.cn

400-901-9800

— DATASHEET —

Host: Rabbit	Isotype: IgG	Applications: IHC-P (1:100-500) IHC-F (1:100-500) IF (1:100-500) Reactivity: Human (predicted: Mouse, Rat, Rabbit, Pig, Cow, Dog, Horse) Predicted MW.: 92 kDa Subcellular Location: Cell membrane
Clonality: Polyclonal		
GeneID: 7222	SWISS: Q13507	
Target: TRPC3		
Immunogen: KLH conjugated synthetic peptide derived from human TRPC3: 201-300/836.		
Purification: affinity purified by Protein A		
Concentration: 1mg/ml		
Storage: 0.01M TBS (pH7.4) with 1% BSA, 0.02% Proclin300 and 50% Glycerol. Shipped at 4°C. Store at -20°C for one year. Avoid repeated freeze/thaw cycles.		
Background: TRPC channels form the subfamily of channels in human most closely related to drosophila TRP channels. Structurally, this family shares a number of similar characteristics. At the proximal C-terminus of this sub-family is a TRP box motif containing the invariant EWKFAR sequence and between 3 and 4 ankyrin repeats near the N-terminus. These channels are non-selectively permeable to cations, with a selectivity of calcium over sodium variable among the different members. Many of TRPC channel subunits are able to coassemble.		

— VALIDATION IMAGES —

Tissue/cell: human lung carcinoma; 4% Paraformaldehyde-fixed and paraffin-embedded; Antigen retrieval: citrate buffer (0.01M, pH 6.0), Boiling bathing for 15min; Block endogenous peroxidase by 3% Hydrogen peroxide for 30min; Blocking buffer (normal goat serum, C-0005) at 37°C for 20 min; Incubation: Anti-TRPC3 Polyclonal Antibody, Unconjugated(bs-6702R) 1:200, overnight at 4°C, followed by conjugation to the secondary antibody(SP-0023) and DAB(C-0010) staining