

**bsm-52046R****[ Primary Antibody ]****BioSS**  
ANTIBODIES

www.bioss.com.cn

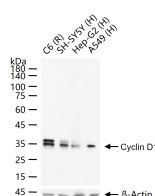
sales@bioss.com.cn

techsupport@bioss.com.cn

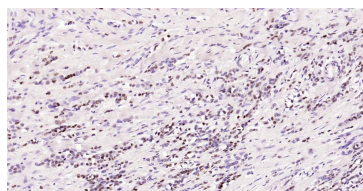
400-901-9800

**Cyclin D1 Recombinant Rabbit mAb****— DATASHEET —**

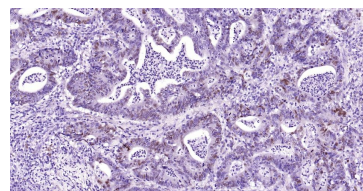
<b>Host:</b> Rabbit	<b>Isotype:</b> IgG	<b>Applications:</b> WB (1:500-2000) <b>IHC-P</b> (1:50-200) <b>IHC-F</b> (1:50-200) <b>IF</b> (1:50-200) <b>ICC/IF</b> (1:50-200)
<b>Clonality:</b> Recombinant	<b>CloneNo.:</b> 2H4	
<b>GeneID:</b> 595	<b>SWISS:</b> P24385	
<b>Target:</b> Cyclin D1		
<b>Immunogen:</b> A synthesized peptide derived from human Cyclin D1: 261-295.		
<b>Purification:</b> affinity purified by Protein A		<b>Reactivity:</b> Human, Mouse, Rat
<b>Concentration:</b> 1mg/ml		
<b>Storage:</b> 0.01M TBS (pH7.4) with 1% BSA, 0.02% Proclin300 and 50% Glycerol. Shipped at 4°C. Store at -20°C for one year. Avoid repeated freeze/thaw cycles.		<b>Predicted MW.:</b> 32 kDa
<b>Background:</b> The protein encoded by this gene belongs to the highly conserved cyclin family, whose members are characterized by a dramatic periodicity in protein abundance throughout the cell cycle. Cyclins function as regulators of CDK kinases. Different cyclins exhibit distinct expression and degradation patterns which contribute to the temporal coordination of each mitotic event. This cyclin forms a complex with and functions as a regulatory subunit of CDK4 or CDK6, whose activity is required for cell cycle G1/S transition. This protein has been shown to interact with tumor suppressor protein Rb and the expression of this gene is regulated positively by Rb. Mutations, amplification and overexpression of this gene, which alters cell cycle progression, are observed frequently in a variety of tumors and may contribute to tumorigenesis. [provided by RefSeq, Jul 2008].		<b>Subcellular Location:</b> Cell membrane ,Cytoplasm ,Nucleus

**— VALIDATION IMAGES —**

25 ug total protein per lane of various lysates (see on figure) probed with Cyclin D1 monoclonal antibody, unconjugated (bsm-52046R) at 1:2000 dilution and 4°C overnight incubation. Followed by conjugated secondary antibody incubation at r.t. for 60 min.



Paraformaldehyde-fixed, paraffin embedded Human Breast Cancer; Antigen retrieval by boiling in sodium citrate buffer (pH6.0) for 15 min; Antibody incubation with Cyclin D1 Monoclonal Antibody, Unconjugated (bsm-52046R) at 1:200 overnight at 4°C, followed by conjugation to the SP Kit (Rabbit, SP-0023) and DAB (C-0010) staining.



Paraformaldehyde-fixed, paraffin embedded Human Colon Cancer; Antigen retrieval by boiling in sodium citrate buffer (pH6.0) for 15 min; Antibody incubation with Cyclin D1 Monoclonal Antibody, Unconjugated (bsm-52046R) at 1:200 overnight at 4°C, followed by conjugation to the SP Kit (Rabbit, SP-0023) and DAB (C-0010) staining.

**— SELECTED CITATIONS —**

- **[IF=14.7]** Zhou Mengze. et al. P2Y14R activation facilitates liver regeneration via CREB/DNMT3b/Dact-2/?eta-Catenin signals in acute liver failure ACTA PHARM SIN B. 2025 Jan; Western blot ;Mouse. 10.1016/j.apsb.2025.01.004
- **[IF=5.3]** Caixia Tan. et al. Mcl-1 downregulation enhances BCG treatment efficacy in bladder cancer by promoting macrophage polarization. Cancer Cell International. 2025 Feb 15;25(1):48. ;. 39955585
- **[IF=3.853]** Xing, Jing. et al. CircZNF644 aggravates lipopolysaccharide-induced HK-2 cell impairment via the miR-140-5p/MLKL axis. J BIOENERG BIOMEMBR. 2022 Aug;;1-12 WB ;Human. 35976517

Important Note: This product as supplied is intended for research use only, not for use in human, therapeutic or diagnostic applications.

- **[IF=3.9]** Lianjie Hou. et al.Exploring the anti-atherosclerosis mechanism of ginsenoside Rb1 by integrating network pharmacology and experimental verification.aging (albany ny).2024 Mar 27;16(8):6745-6756. CO-IP ;Human. 38546402