

**bsm-52021R****[ Primary Antibody ]**

**BioSS**  
ANTIBODIES

www.bioss.com.cn

sales@bioss.com.cn

techsupport@bioss.com.cn

400-901-9800

**Bcl10 Recombinant Rabbit mAb****— DATASHEET —****Host:** Rabbit**Isotype:** IgG**Clonality:** Recombinant**CloneNo.:** 3F4**GeneID:** 8915**SWISS:** Q95999**Target:** Bcl10**Immunogen:** A synthesized peptide derived from human Bcl 10: 1-233/233.**Purification:** affinity purified by Protein A**Concentration:** 1mg/ml

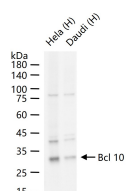
**Storage:** 0.01M TBS (pH7.4) with 1% BSA, 0.02% Proclin300 and 50% Glycerol.  
Shipped at 4°C. Store at -20°C for one year. Avoid repeated freeze/thaw cycles.

**Background:** This gene was identified by its translocation in a case of mucosa-associated lymphoid tissue (MALT) lymphoma. The protein encoded by this gene contains a caspase recruitment domain (CARD), and has been shown to induce apoptosis and to activate NF-kappaB. This protein is reported to interact with other CARD domain containing proteins including CARD9, 10, 11 and 14, which are thought to function as upstream regulators in NF-kappaB signaling. This protein is found to form a complex with MALT1, a protein encoded by another gene known to be translocated in MALT lymphoma. MALT1 and this protein are thought to synergize in the activation of NF-kappaB, and the deregulation of either of them may contribute to the same pathogenetic process that leads to the malignancy. [provided by RefSeq, Jul 2008]

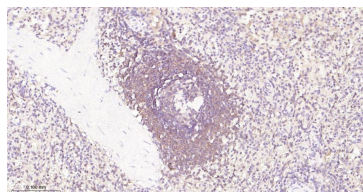
**Applications:** WB (1:200-1000)**IHC-P** (1:50-200)**IHC-F** (1:50-200)**IF** (1:50-200)**Flow-Cyt** (1:50-100)**ICC/IF** (1:50-200)**Reactivity:** Human

**Predicted**  
**MW.:** 26 kDa

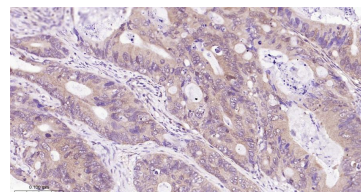
**Subcellular**  
**Location:** Cell membrane ,Cytoplasm

**— VALIDATION IMAGES —**

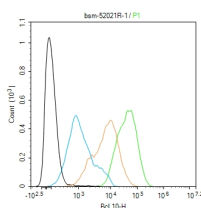
25 ug total protein per lane of various lysates (see on figure) probed with Bcl 10 monoclonal antibody, unconjugated (bsm-52021R) at 1:1000 dilution and 4°C overnight incubation. Followed by conjugated secondary antibody incubation at r.t. for 60 min.



Paraformaldehyde-fixed, paraffin embedded Human Spleen; Antigen retrieval by boiling in sodium citrate buffer (pH6.0) for 15 min; Antibody incubation with Bcl10 Monoclonal Antibody, Unconjugated(bsm-52021R) at 1:200 overnight at 4°C, followed by conjugation to the bs-0295G-HRP and DAB (C-0010) staining.



Paraformaldehyde-fixed, paraffin embedded Human Colon Cancer; Antigen retrieval by boiling in sodium citrate buffer (pH6.0) for 15 min; Antibody incubation with Bcl10 Monoclonal Antibody, Unconjugated(bsm-52021R) at 1:200 overnight at 4°C, followed by conjugation to the bs-0295G-HRP and DAB (C-0010) staining.



The Raji (H) cells were fixed with 4% PFA (10 min at r.t.) and then permeabilized with 90% ice-cold methanol for 20 min at -20°C, the cells then were incubated in 5%BSA to block non-specific protein-protein interactions (30 min at r.t.).Primary Antibody (green):Rabbit Anti-Bcl 10

**Important Note:** This product as supplied is intended for research use only, not for use in human, therapeutic or diagnostic applications.

antibody (bsm-52021R,1:100); Secondary  
Antibody (white blue): Goat anti-Rabbit IgG-  
BF488 (bs-60295G-BF488): 1 µg/test. Isotype  
Control (orange): Rabbit IgG (bs-0295P). Blank  
control (black): PBS. Acquisition of 20,000 events  
was performed.