

## ARF1 Recombinant Rabbit mAb

Catalog Number: bsm-52016R

Target Protein: ARF1

Concentration: 1mg/ml

Form: Liquid

Host: Rabbit

Clonality: Recombinant

Clone No.: 1D4

Isotype: IgG

Applications: WB (1:500-2000), IHC-P (1:50-200), IHC-F (1:50-200), IF (1:50-200), Flow-Cyt (1:50-100), ICC/IF (1:50-200)

Reactivity: Human, Mouse, Rat

Predicted MW: 21 kDa

Entrez Gene: 375

Swiss Prot: P84077

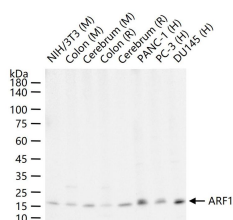
Purification: affinity purified by Protein A

Storage: 0.01M TBS (pH7.4) with 1% BSA, 0.02% Proclin300 and 50% Glycerol.

Shipped at 4°C. Store at -20°C for one year. Avoid repeated freeze/thaw cycles.

**Background:** GTP-binding protein that functions as an allosteric activator of the cholera toxin catalytic subunit, an ADP-ribosyltransferase. Involved in protein trafficking among different compartments. Modulates vesicle budding and uncoating within the Golgi complex. Deactivation induces the redistribution of the entire Golgi complex to the endoplasmic reticulum, suggesting a crucial role in protein trafficking. In its GTP-bound form, it triggers the association with coat proteins with the Golgi membrane. The hydrolysis of ARF1-bound GTP, which is mediated by ARFGAPs proteins, is required for dissociation of coat proteins from Golgi membranes and vesicles.

### VALIDATION IMAGES



25 ug total protein per lane of various lysates (see on figure) probed with ARF1 monoclonal antibody, unconjugated (bsm-52016R) at 1:1000 dilution and 4°C overnight incubation. Followed by conjugated secondary antibody incubation at r.t. for 60 min.