
A-RAF Recombinant Rabbit mAb

Catalog Number: bsm-52015R

Target Protein: A-RAF

Concentration: 1mg/ml

Form: Liquid

Host: Rabbit

Clonality: Recombinant

Clone No.: 24D1

Isotype: IgG

Applications: WB (1:500-2000), IHC-P (1:100-500), IHC-F (1:50-200), IF (1:50-200), ICC/IF (1:50-200)

Reactivity: Human

Predicted MW: 68 kDa

Entrez Gene: 369

Swiss Prot: P10398

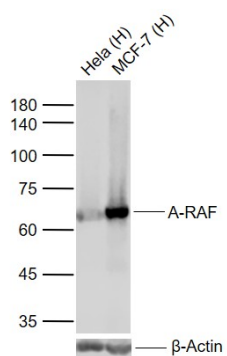
Purification: affinity purified by Protein A

Storage: 0.01M TBS (pH7.4) with 1% BSA, 0.02% Proclin300 and 50% Glycerol.

Shipped at 4°C. Store at -20°C for one year. Avoid repeated freeze/thaw cycles.

Background: The RAF family of signaling proteins has three isoforms: A RAF, RAF 1 and B RAF. These proteins are instrumental in forwarding the stimulus generated by mitogens from monomeric G proteins to the MAP kinase pathway. RAF 1 is known to be downstream of Ras and binds to it by an N terminal noncatalytic domain. This domain is conserved in A RAF and B RAF. 14-3-3 is also known to be an activator of RAFs. Activated RAF directly phosphorylates and activates MEK. A RAF is expressed at a very high concentration in urogenital and kidney tissues.

VALIDATION IMAGES



Sample: Lane 1: Human HeLa cell lysates Lane 2: Human MCF-7 cell lysates Primary: Anti-A-RAF (bsm-52015R) at 1/1000 dilution Secondary: IRDye800CW Goat Anti-Rabbit IgG at 1/20000 dilution Predicted band size: 68 kDa Observed band size: 65 kDa