

bs-6515R

[Primary Antibody]

ABC2 Rabbit pAb

Bioss
ANTIBODIES

www.bioss.com.cn

sales@bioss.com.cn

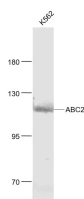
techsupport@bioss.com.cn

400-901-9800

— DATASHEET —

| | | |
|-------------------------------------------------------------------------------------------------------------------------------------------------------------------------------------------------|----------------------|------------------------------------------------------------------------------------------------|
| Host: Rabbit | Isotype: IgG | Applications: WB (1:500-2000) |
| Clonality: Polyclonal | | Reactivity: Human (predicted: Mouse, Rat, Rabbit, Pig, Sheep, Cow, Chicken, Dog, Horse) |
| GeneID: 55181 | SWISS: Q8ND04 | |
| Target: ABC2 | | Predicted MW.: 110 kDa |
| Immunogen: KLH conjugated synthetic peptide derived from human ABC2/C17orf71: 721-820/991. | | Subcellular Location: Cytoplasm |
| Purification: affinity purified by Protein A | | |
| Concentration: 1mg/ml | | |
| Storage: 0.01M TBS (pH7.4) with 1% BSA, 0.02% Proclin300 and 50% Glycerol. Shipped at 4°C. Store at -20°C for one year. Avoid repeated freeze/thaw cycles. | | |
| Background: C17orf71 belongs to the UPF0487 family. There are 3 isoforms produced by alternative splicing. Positive control; Human Anaplastic Thyroid Carcinoma, Human Breast Carcinoma. | | |

— VALIDATION IMAGES —



Sample: K562 (Human) Cell Lysate at 30 ug
Primary: Anti- ABC2 (bs-6515R) at 1/1000 dilution
Secondary: IRDye800CW Goat Anti-Rabbit IgG at 1/20000 dilution Predicted band size: 110 kD
Observed band size: 110 kD