

bs-8045R**[Primary Antibody]****KBTBD4 Rabbit pAb****Bioss**
ANTIBODIES

www.bioss.com.cn

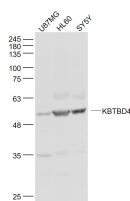
sales@bioss.com.cn

techsupport@bioss.com.cn

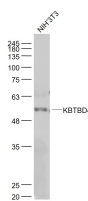
400-901-9800

— DATASHEET —

Host: Rabbit	Isotype: IgG	Applications: WB (1:500-2000)
Clonality: Polyclonal		Reactivity: Human, Mouse (predicted: Rat, Rabbit, Pig, Sheep, Cow, Dog, Horse)
GeneID: 55709	SWISS: Q9NVX7	
Target: KBTBD4		Predicted MW.: 58 kDa
Immunogen: KLH conjugated synthetic peptide derived from human KBTBD4: 201-280/518.		Subcellular Location: Cytoplasm ,Nucleus
Purification: affinity purified by Protein A		
Concentration: 1mg/ml		
Storage: 0.01M TBS (pH7.4) with 1% BSA, 0.02% Proclin300 and 50% Glycerol. Shipped at 4°C. Store at -20°C for one year. Avoid repeated freeze/thaw cycles.		

— VALIDATION IMAGES —

Sample: U87MG(Human) Cell Lysate at 30 ug
HL60(Human) Cell Lysate at 30 ug SY5Y(Human)
Cell Lysate at 30 ug Primary: Anti- KBTBD4
(bs-8045R) at 1/1000 dilution Secondary:
IRDye800CW Goat Anti-Rabbit IgG at 1/20000
dilution Predicted band size: 58 kD Observed
band size: 58 kD



Sample: NIH/3T3(Mouse) Cell Lysate at 30 ug
Primary: Anti- KBTBD4 (bs-8045R) at 1/1000
dilution Secondary: IRDye800CW Goat Anti-
Rabbit IgG at 1/20000 dilution Predicted band
size: 58 kD Observed band size: 58 kD