

PRRT2 Rabbit pAb

Catalog Number: bs-19430R

Target Protein: PRRT2

Concentration: 1mg/ml

Form: Liquid

Host: Rabbit

Clonality: Polyclonal

Isotype: IgG

Applications: WB (1:500-2000)

Reactivity: Mouse (predicted:Human, Pig, Cow, Dog, Horse)

Predicted MW: 35, 40 kDa

Entrez Gene: 112476

Swiss Prot: Q7Z6L0

Source: KLH conjugated synthetic peptide derived from human PRRT2: 201-300/340.

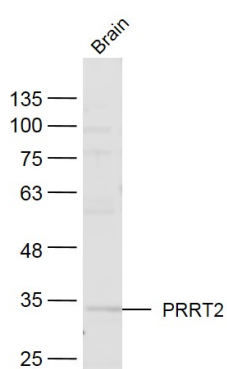
Purification: affinity purified by Protein A

Storage: 0.01M TBS (pH7.4) with 1% BSA, 0.02% Proclin300 and 50% Glycerol.

Shipped at 4°C. Store at -20°C for one year. Avoid repeated freeze/thaw cycles.

Background: This gene encodes a transmembrane protein containing a proline-rich domain in its N-terminal half. Studies in mice suggest that it is predominantly expressed in brain and spinal cord in embryonic and postnatal stages. Mutations in this gene are associated with episodic kinesigenic dyskinesia-1. Alternatively spliced transcript variants encoding different isoforms have been found for this gene. [provided by RefSeq, Jan 2012]

VALIDATION IMAGES



Sample: Brain (Mouse) Lysate at 40 ug Primary: Anti-PRRT2 (bs-19430R) at 1/300 dilution Secondary: IRDye800CW Goat Anti-Rabbit IgG at 1/20000 dilution Predicted band size: 35 kD Observed band size: 35 kD