
Recombinant human GLUT1 protein, GST & His

Catalog Number: bs-41338P

Concentration: >0.5 mg/ml

AA Seq: 216-280/492

Predicted MW: 33

Detected MW: 34 kDa

Tags: GST & His

Activity: Not tested

Endotoxin: Not analyzed

Purity: >90% as determined by SDS-PAGE

Purification: AC

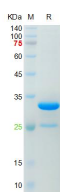
Form: Lyophilized or Liquid

Storage: 8M Urea (pH9.0) with 1mM DTT.

Stored at -70°C or -20°C. Avoid repeated freeze/thaw cycles.

Background: This gene encodes a major glucose transporter in the mammalian blood-brain barrier. Mutations in this gene have been found in a family with paroxysmal exertion-induced dyskinesia. [provided by RefSeq, Jul 2008].

VALIDATION IMAGES



The purity of the protein is greater than 85% as determined by reducing SDS-PAGE.