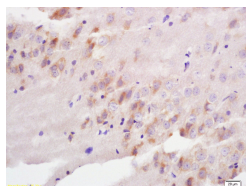


GABARAPL1 Rabbit pAb

Catalog Number: bs-8035R
Target Protein: GABARAPL1
Concentration: 1mg/ml
Form: Liquid
Host: Rabbit
Clonality: Polyclonal
Isotype: IgG
Applications: IHC-P (1:100-500), IHC-F (1:100-500), IF (1:100-500)
Reactivity: Rat (predicted:Human, Mouse, Rabbit, Pig, Cow, Dog)
Predicted MW: 14 kDa
Entrez Gene: 23710
Swiss Prot: Q9H0R8
Source: KLH conjugated synthetic peptide derived from human GABARAPL1: 41-117/117.
Purification: affinity purified by Protein A
Storage: 0.01M TBS (pH7.4) with 1% BSA, 0.02% Proclin300 and 50% Glycerol.
Shipped at 4°C. Store at -20°C for one year. Avoid repeated freeze/thaw cycles.
Background: GABARAPL1 belongs to the MAP1 LC3 family. It increases cell surface expression of kappa type opioid receptor through facilitating anterograde intracellular trafficking of the receptor.

VALIDATION IMAGES



Tissue/cell: rat brain tissue; 4% Paraformaldehyde-fixed and paraffin-embedded; Antigen retrieval: citrate buffer (0.01M, pH 6.0), Boiling bathing for 15min; Block endogenous peroxidase by 3% Hydrogen peroxide for 30min; Blocking buffer (normal goat serum,C-0005) at 37°C for 20 min; Incubation: Anti-GABARAPL1 Polyclonal Antibody, Unconjugated(bs-8035R) 1:200, overnight at 4°C, followed by conjugation to the secondary antibody(SP-0023) and DAB(C-0010) staining

PRODUCT SPECIFIC PUBLICATIONS

[IF=3.1] Li Chen. et al. Gandouling alleviates nerve injury through PI3K/Akt/FoxO1 and Sirt1/FoxO1 signaling pathway to inhibit autophagy in the rats model of Wilson's disease. BRAIN BEHAV. 2023 Nov;;e3325 WB ; Rat . 38010098