

**bs-7862R****[ Primary Antibody ]****FAM3C Rabbit pAb****BioSS**  
**ANTIBODIES**

www.bioss.com.cn

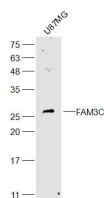
sales@bioss.com.cn

techsupport@bioss.com.cn

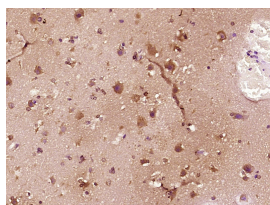
400-901-9800

**— DATASHEET —**

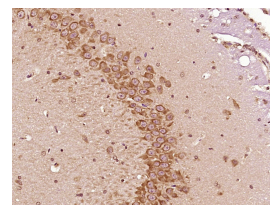
<b>Host:</b> Rabbit	<b>Isotype:</b> IgG	<b>Applications:</b> <b>WB</b> (1:500-2000)
<b>Clonality:</b> Polyclonal		<b>IHC-P</b> (1:100-500)
<b>GeneID:</b> 10447	<b>SWISS:</b> Q92520	<b>IHC-F</b> (1:100-500)
<b>Target:</b> FAM3C		<b>IF</b> (1:100-500)
<b>Immunogen:</b> KLH conjugated synthetic peptide derived from human FAM3C: 151-227/227.		<b>Reactivity:</b> Human, Rat (predicted: Mouse, Pig, Cow, Chicken, Dog, Horse)
<b>Purification:</b> affinity purified by Protein A		
<b>Concentration:</b> 1mg/ml		<b>Predicted MW.:</b> 22 kDa
<b>Storage:</b> 0.01M TBS (pH7.4) with 1% BSA, 0.02% Proclin300 and 50% Glycerol. Shipped at 4°C. Store at -20°C for one year. Avoid repeated freeze/thaw cycles.		<b>Subcellular Location:</b> Secreted ,Cytoplasm
<b>Background:</b> ILEI is a 227 amino acid, ubiquitously expressed protein containing an amino-terminal signal peptide. Elevated levels of ILEI translation are observed in oncogenic, Ras-transformed mammary epithelial cells and epithelial to mesenchymal transition (Emt) as well as tumor growth and metastasis. Also, overexpression of ILEI results in loss of ZO-1, a protein involved in tight junctions, and expression of cytoplasmic E-cadherin, which has been shown to influence loss of polarity and invasiveness. Due to this evidence, it is suspected that ILEI cooperates with oncogenic Ras to cause TGF $\beta$ -independent Emt and its overexpression is correlated with the invasion, metastasis and survival in a variety of cancers.		

**— VALIDATION IMAGES —**

Sample: U87MG(Human) Cell Lysate at 30 ug  
 Primary: Anti-FAM3C (bs-7862R) at 1/300 dilution  
 Secondary: IRDye800CW Goat Anti-Rabbit IgG at 1/20000 dilution Predicted band size: 22 kD  
 Observed band size: 22 kD



Paraformaldehyde-fixed, paraffin embedded (Human brain glioma); Antigen retrieval by boiling in sodium citrate buffer (pH6.0) for 15min; Block endogenous peroxidase by 3% hydrogen peroxide for 20 minutes; Blocking buffer (normal goat serum) at 37°C for 30min; Antibody incubation with (FAM3C) Polyclonal Antibody, Unconjugated (bs-7862R) at 1:400 overnight at 4°C, followed by operating according to SP Kit(Rabbit) (sp-0023) instructions and DAB staining.



Paraformaldehyde-fixed, paraffin embedded (Rat brain); Antigen retrieval by boiling in sodium citrate buffer (pH6.0) for 15min; Block endogenous peroxidase by 3% hydrogen peroxide for 20 minutes; Blocking buffer (normal goat serum) at 37°C for 30min; Antibody incubation with (FAM3C) Polyclonal Antibody, Unconjugated (bs-7862R) at 1:400 overnight at 4°C, followed by operating according to SP Kit(Rabbit) (sp-0023) instructions and DAB staining.