

bs-19427R**[Primary Antibody]****PRRG3 Rabbit pAb****BioSS**
ANTIBODIES

www.bioss.com.cn

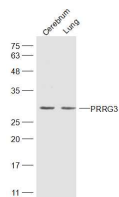
sales@bioss.com.cn

techsupport@bioss.com.cn

400-901-9800

— DATASHEET —

Host: Rabbit	Isotype: IgG	Applications: WB (1:500-2000)
Clonality: Polyclonal		
GeneID: 79057	SWISS: Q9BZD7	
Target: PRRG3		
Immunogen: KLH conjugated synthetic peptide derived from human PRRG3: 1-100/231.		
Purification: affinity purified by Protein A		Reactivity: Mouse (predicted: Human, Rat)
Concentration: 1mg/ml		Predicted MW.: 24 kDa
Storage: 0.01M TBS (pH7.4) with 1% BSA, 0.02% Proclin300 and 50% Glycerol. Shipped at 4°C. Store at -20°C for one year. Avoid repeated freeze/thaw cycles.		Subcellular Location: Cell membrane
Background: This gene encodes a protein which contains a vitamin K-dependent carboxylation/gamma-carboxyglutamic domain. The encoded protein is a member of a family of vitamin K-dependent transmembrane proteins which contain a glutamate-rich extracellular domain. [provided by RefSeq, Aug 2011]		

— VALIDATION IMAGES —

Sample: Cerebrum (Mouse) Lysate at 40 ug Lung
(Mouse) Lysate at 40 ug Primary: Anti-PRRG3
(bs-19427R) at 1/300 dilution Secondary:
IRDye800CW Goat Anti-Rabbit IgG at 1/20000
dilution Predicted band size: 24 kD Observed
band size: 28 kD