

bs-22058R**[Primary Antibody]****BioSS**
ANTIBODIES

www.bioss.com.cn

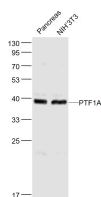
sales@bioss.com.cn

techsupport@bioss.com.cn

400-901-9800

PTF1A Rabbit pAb**— DATASHEET —**

Host: Rabbit Clonality: Polyclonal GeneID: 256297 Target: PTF1A Immunogen: KLH conjugated synthetic peptide derived from human PTF1A: 141-240/328. Purification: affinity purified by Protein A Concentration: 1mg/ml Storage: 0.01M TBS (pH7.4) with 1% BSA, 0.02% Proclin300 and 50% Glycerol. Shipped at 4°C. Store at -20°C for one year. Avoid repeated freeze/thaw cycles. Background: PTF1 is a pancreas-specific protein that functions as a component of the trimeric pancreas transcription factor 1 (PTF1) complex. Localizing to the nucleus, PTF1 contains one basic helix-loop-helix (bHLH) domain and is believed to play an important role in mammalian pancreatic development, functioning as a transcription factor that regulates the specification of all three pancreatic cell types. PTF1 interacts with RBP-J x and, together, they cooperate in regulating the expression of PDX-1 (pancreas/duodenum homeobox protein 1), a key regulator of pancreatic islet development and insulin gene transcription in beta-cells. Loss of functional PTF1 can cause pancreatic progenitors to take on the normal fates of duodenal epithelia. Mutations in the gene encoding PTF1 lead to diabetes mellitus and cerebellar hypoplasia/agenesis, suggesting that PTF1 also plays and important role in cerebellar neurogenesis.	Isotype: IgG SWISS: Q7RTS3 Applications: WB (1:500-2000) Reactivity: Mouse (predicted: Human, Rat, Pig, Cow, Chicken) Predicted MW.: 35 kDa Subcellular Location: Cytoplasm ,Nucleus
---	---

— VALIDATION IMAGES —

Sample: Pancreas (Mouse) Lysate at 40 ug
NIH/3T3(Mouse) Cell Lysate at 30 ug Primary:
Anti- PTF1A (bs-22058R) at 1/1000 dilution
Secondary: IRDye800CW Goat Anti-Rabbit IgG at
1/20000 dilution Predicted band size: 35 kD
Observed band size: 38 kD