

bs-13151R**[Primary Antibody]****FCGRT Rabbit pAb****BioSS**
ANTIBODIES

www.bioss.com.cn

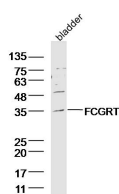
sales@bioss.com.cn

techsupport@bioss.com.cn

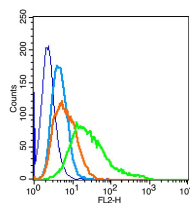
400-901-9800

— DATASHEET —

Host: Rabbit Clonality: Polyclonal GeneID: 2217 Target: FCGRT Immunogen: KLH conjugated synthetic peptide derived from human FCGRT/FcRn: 51-150/365. < Extracellular > Purification: affinity purified by Protein A Concentration: 1mg/ml Storage: 0.01M TBS (pH7.4) with 1% BSA, 0.02% Proclin300 and 50% Glycerol. Shipped at 4°C. Store at -20°C for one year. Avoid repeated freeze/thaw cycles. Background: FcRn present in the intestinal epithelium of neonatal mice and rats mediates the selective uptake of immunoglobulin G (IgG) in mothers' milk, thereby helping newborn animals to acquire passive immunity. FcRn (also designated FCGRT, Brambell receptor, FcRn α chain, IgG Gc receptor and neonatal Fc-receptor) is comprised of a heavy chain and β -2-Microglobulin. FcRn heavy chain shows approximately 35% amino acid identity to an MHC class I molecule. FcRn localizes in endosomes of vascular endothelial cells and selectively recycles IgG to the cell surface, thus protecting IgG from lysosomal catabolism. This protection mechanism is a major constituent for ensuring IgG are the longest lived of all plasma proteins.	Isotype: IgG SWISS: P55899 Applications: WB (1:500-2000) Flow-Cyt (3 μ g/Test) Reactivity: Human, Mouse (predicted: Rat, Sheep, Dog) Predicted MW.: 37 kDa Subcellular Location: Cell membrane
--	---

— VALIDATION IMAGES —

Sample: bladder (Mouse) Lysate at 40 μ g Primary:
Anti-FCGRT(bs-13151R) at 1/300 dilution
Secondary: IRDye800CW Goat Anti-Rabbit IgG at
1/20000 dilution Predicted band size: 38kD
Observed band size: 38 kD



Blank control(blue): U-87MG(fixed with 2% paraformaldehyde (10 min)). Primary Antibody:Rabbit AntiFCGRT antibody(bs-13151R), Dilution: 3 μ g in 100 μ L 1X PBS containing 0.5% BSA; Isotype Control Antibody: Rabbit IgG(orange), used under the same conditions); Secondary Antibody: Goat anti-rabbit IgG-PE(white blue), Dilution: 1:200 in 1 X PBS containing 0.5% BSA.

— SELECTED CITATIONS —

- **[IF=1.64]** Zhang, Wang-Dong, et al. "Localization of neonatal Fc receptor for IgG in aggregated lymphoid nodules area in abomasum of Bactrian camels (Camelus bactrianus) of different ages." BMC Veterinary Research 12.1 (2016): 237. IHC ;="Others". 27765059