

**bs-16115R****[ Primary Antibody ]****Cadherin28 Rabbit pAb****BioSS**  
**ANTIBODIES**

www.bioss.com.cn

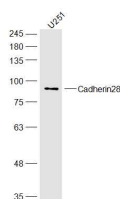
sales@bioss.com.cn

techsupport@bioss.com.cn

400-901-9800

**— DATASHEET —**

<b>Host:</b> Rabbit	<b>Isotype:</b> IgG	<b>Applications:</b> WB (1:500-2000)
<b>Clonality:</b> Polyclonal		<b>Reactivity:</b> Human (predicted: Mouse, Rat, Dog, Horse)
<b>GeneID:</b> 222256	<b>SWISS:</b> Q6ZTQ4	
<b>Target:</b> Cadherin28		<b>Predicted MW.:</b> 96 kDa
<b>Immunogen:</b> KLH conjugated synthetic peptide derived from human Cadherin28: 101-200/885. < Extracellular >		<b>Subcellular Location:</b> Cell membrane
<b>Purification:</b> affinity purified by Protein A		
<b>Concentration:</b> 1mg/ml		
<b>Storage:</b> 0.01M TBS (pH7.4) with 1% BSA, 0.02% Proclin300 and 50% Glycerol. Shipped at 4°C. Store at -20°C for one year. Avoid repeated freeze/thaw cycles.		
<b>Background:</b> Cadherins are calcium dependent cell adhesion proteins. They preferentially interact with themselves in a homophilic manner in connecting cells; cadherins may thus contribute to the sorting of heterogeneous cell types.		

**— VALIDATION IMAGES —**

Sample: U251(Human) Cell Lysate at 30 ug  
Primary: Anti-Cadherin28 (bs-16115R) at 1/300  
dilution Secondary: IRDye800CW Goat Anti-  
Rabbit IgG at 1/20000 dilution Predicted band  
size: 96 kD Observed band size: 96 kD