

bs-13325R**[Primary Antibody]****Bioss**
ANTIBODIES

www.bioss.com.cn

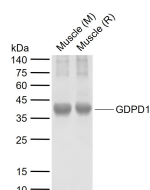
sales@bioss.com.cn

techsupport@bioss.com.cn

400-901-9800

GDPD1 Rabbit pAb**— DATASHEET —**

Host: Rabbit	Isotype: IgG	Applications: WB (1:500-2000)
Clonality: Polyclonal		
GeneID: 284161	SWISS: Q8N9F7	
Target: GDPD1		
Immunogen: KLH conjugated synthetic peptide derived from human GDPD1/GDE4: 221-314/314.		
Purification: affinity purified by Protein A		Reactivity: Mouse, Rat (predicted: Human, Rabbit, Sheep, Cow, Dog)
Concentration: 1mg/ml		Predicted MW.: 36 kDa
Storage: 0.01M TBS (pH7.4) with 1% BSA, 0.02% Proclin300 and 50% Glycerol. Shipped at 4°C. Store at -20°C for one year. Avoid repeated freeze/thaw cycles.		Subcellular Location: Cytoplasm
Background: GDE4 is a 314 amino acid cytoplasmic and multi-pass membrane protein that belongs to the glycerophosphoryl diester phosphodiesterase family. Expressed in small intestine, placenta, kidney, ovary, thymus, pancreas, spleen, liver and peripheral blood leukocytes, GDE4 contains one GDPD domain and exists as three alternatively spliced isoforms. GDE4 is encoded by a gene that maps to human chromosome 17, which comprises over 2.5% of the human genome and encodes over 1,200 genes. Two key tumor suppressor genes are associated with chromosome 17, namely, p53 and BRCA1.		

— VALIDATION IMAGES —

Sample: Lane 1: Mouse Muscle tissue lysates
Lane 2: Rat Muscle tissue lysates Primary: Anti-GDPD1 (bs-13325R) at 1/1000 dilution
Secondary: IRDye800CW Goat Anti-Rabbit IgG at 1/20000 dilution Predicted band size: 36 kDa
Observed band size: 38 kDa