

**bs-0155R****[ Primary Antibody ]****Bioss**  
ANTIBODIES

www.bioss.com.cn

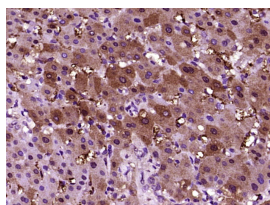
sales@bioss.com.cn

techsupport@bioss.com.cn

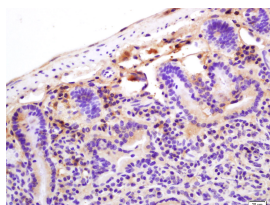
400-901-9800

**CRP Rabbit pAb****DATASHEET**

<b>Host:</b> Rabbit	<b>Isotype:</b> IgG	<b>Applications:</b> IHC-P (1:100-500) IHC-F (1:100-500) IF (1:100-500)  <b>Reactivity:</b> Human, Mouse (predicted: Rat, Rabbit, Pig, Dog)  <b>Predicted MW.:</b> 25 kDa  <b>Subcellular Location:</b> Secreted
<b>Clonality:</b> Polyclonal		
<b>GeneID:</b> 1401	<b>SWISS:</b> P02741	
<b>Target:</b> CRP		
<b>Immunogen:</b> KLH conjugated synthetic peptide derived from human CRP: 125-224/224.		
<b>Purification:</b> affinity purified by Protein A		
<b>Concentration:</b> 1mg/ml		
<b>Storage:</b> 0.01M TBS (pH7.4) with 1% BSA, 0.02% Proclin300 and 50% Glycerol. Shipped at 4°C. Store at -20°C for one year. Avoid repeated freeze/thaw cycles.		
<b>Background:</b> Pentraxins are plasma proteins characterized by their pentameric discoid assembly and their Ca <sup>2+</sup> dependent ligand binding, such as Serum amyloid P component (SAP) and C-reactive Protein (CRP), which are cytokine-inducible acute-phase proteins implicated in innate immunity. CRP binds to ligands containing phosphocholine, SAP binds to amyloid fibrils, DNA, chromatin, fibronectin, C4-binding proteins and glycosaminoglycans. "Long" pentraxins have N-terminal extensions to the common pentraxin domain; one group, the neuronal pentraxins, may be involved in synapse formation and remodeling, and they may also be able to form heteromultimers.		

**VALIDATION IMAGES**

Paraformaldehyde-fixed, paraffin embedded (Human liver); Antigen retrieval by boiling in sodium citrate buffer (pH6.0) for 15min; Block endogenous peroxidase by 3% hydrogen peroxide for 20 minutes; Blocking buffer (normal goat serum) at 37°C for 30min; Antibody incubation with (CRP) Polyclonal Antibody, Unconjugated (bs-0155R) at 1:400 overnight at 4°C, followed by operating according to SP Kit(Rabbit) (sp-0023) instructions and DAB staining.



Tissue/cell: mouse intestine tissue; 4% Paraformaldehyde-fixed and paraffin-embedded; Antigen retrieval: citrate buffer (0.01M, pH 6.0), Boiling bathing for 15min; Block endogenous peroxidase by 3% Hydrogen peroxide for 30min; Blocking buffer (normal goat serum, C-0005) at 37°C for 20 min; Incubation: Anti-CRP Polyclonal Antibody, Unconjugated(bs-0155R) 1:200, overnight at 4°C, followed by conjugation to the secondary antibody(SP-0023) and DAB(C-0010) staining

**SELECTED CITATIONS**

- **[IF=8.355]** Liu X et al. Polydopamine-based molecular imprinted optic microfiber sensor enhanced by template-mediated molecular rearrangement for ultra-sensitive C-reactive protein detection. Chemical Engineering Journal. 2020, May 387: 124074. Other ;. doi:10.1016/j.cej.2020.124074
- **[IF=6.8]** Ye Jiazhou. et al. Single cell-spatial transcriptomics and bulk multi-omics analysis of heterogeneity and ecosystems in hepatocellular carcinoma. NPJ PRECIS ONCOL. 2024 Nov;8(1):1-18 IHC ;Human. 39548284

Important Note: This product as supplied is intended for research use only, not for use in human, therapeutic or diagnostic applications.

- **[IF=7.3]** Yu Fu. et al. C-reactive protein deficiency ameliorates experimental abdominal aortic aneurysms. FRONT IMMUNOL. 2023; 14: 1233807 IHC ;Mouse. 37753091
- **[IF=5.151]** Zhang L et al. The Protective Activities of Dietary Sea Cucumber Cerebrosides against Atherosclerosis through Regulating Inflammation and Cholesterol Metabolism in Male Mice.Mol Nutr Food Res. 2018 Aug;62(16):e1800315. WB ;Mouse. 29883529
- **[IF=4.916]** Rong Z et al. A C-reactive protein immunosensor based on platinum nanowire/titania nanotube composite sensitized electrochemiluminescence. Talanta, 2019.205, 120135. Other ;Human. doi:10.1016/j.talanta.2019.120135