

bs-1565R**[Primary Antibody]****APCDD1 Rabbit pAb****Bioss**
ANTIBODIES

www.bioss.com.cn

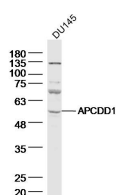
sales@bioss.com.cn

techsupport@bioss.com.cn

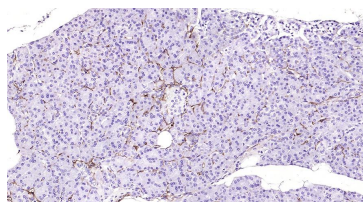
400-901-9800

— DATASHEET —

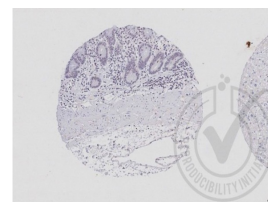
Host: Rabbit	Isotype: IgG	Applications: WB (1:500-2000)
Clonality: Polyclonal		IHC-P (1:100-500)
GeneID: 147495	SWISS: Q8J025	IHC-F (1:100-500)
Target: APCDD1		IF (1:100-500)
Immunogen: KLH conjugated synthetic peptide derived from human APCDD1: 30-130/514.		Reactivity: Human (predicted: Mouse, Rat, Rabbit, Chicken, Dog)
Purification: affinity purified by Protein A		
Concentration: 1mg/ml		Predicted MW.: 56 kDa
Storage: 0.01M TBS (pH7.4) with 1% BSA, 0.02% Proclin300 and 50% Glycerol. Shipped at 4°C. Store at -20°C for one year. Avoid repeated freeze/thaw cycles.		Subcellular Location: Cell membrane
Background: APCDD1 is a novel protein that has been shown to be a target of Wnt/beta catenin signaling pathway in cancer cell lines. APCDD1 is overexpressed in colorectal carcinogenesis and is deregulated in CTNNB1 mutated Wilms tumors. [FUNCTION] Probably plays a role in colorectal tumorigenesis. May be a developmental target gene of the Wnt/Beta-catenin pathway. [SUBCELLULAR LOCATION] Membrane; Single-pass type I membrane protein (Potential). [TISSUE SPECIFICITY] Abundantly expressed in heart, pancreas, prostate and ovary. Moderately expressed in lung, liver, kidney, spleen, thymus, colon and peripheral lymphocytes. [INDUCTION] Transcriptionally regulated by the CTNNB1/TF7L2complex.		

— VALIDATION IMAGES —

Sample: DU145 Cell (Human) Lysate at 40 ug
Primary: Anti-APCDD1 (bs-1565R) at 1/300
dilution Secondary: IRDye800CW Goat Anti-Rabbit IgG at 1/20000 dilution Predicted band size: 56 kD Observed band size: 56 kD



Paraformaldehyde-fixed, paraffin embedded (Human pancreas); Antigen retrieval by boiling in sodium citrate buffer (pH6.0) for 15min; Block endogenous peroxidase by 3% hydrogen peroxide for 20 minutes; Blocking buffer (normal goat serum) at 37°C for 30min; Antibody incubation with (APCDD1) Polyclonal Antibody, Unconjugated (bs-1565R) at 1:200 overnight at 4°C, followed by operating according to SP Kit(Rabbit) (sp-0023) instructions and DAB staining.



Images provided the Independent Validation Program (badge number 029637) Formalin-fixed and paraffin embedded human stomach labeled with Rabbit Anti-APCDD1 Polyclonal Antibody (bs-1565R) at 1:250 room temperature overnight followed by conjugation to secondary antibody.

— SELECTED CITATIONS —

- **[IF=14.7]** Sun Wenmin. et al. Altered chromatin topologies caused by balanced chromosomal translocation lead to central iris hypoplasia. NAT COMMUN. 2024 Jun;15(1):1-14 IF ;Human,Mouse. 38871723