

CD2 Rabbit pAb

Catalog Number: bs-23946R

Target Protein: CD2

Concentration: 1mg/1ml

Form: Liquid

Host: Rabbit

Clonality: Polyclonal

Isotype: IgG

Applications: WB (1:500-2000)

Reactivity: Mouse (predicted:Rat, Horse)

Predicted MW: 37 kDa

Entrez Gene: 12481

Swiss Prot: P08920

Source: KLH conjugated synthetic peptide derived from mouse CD2: 101-200/344.

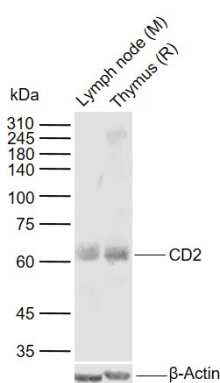
Purification: affinity purified by Protein A

Storage: 0.01M TBS (pH7.4) with 1% BSA, 0.02% Proclin300 and 50% Glycerol.

Shipped at 4°C. Store at -20°C for one year. Avoid repeated freeze/thaw cycles.

Background: The protein encoded by this gene is a surface antigen found on all peripheral blood T-cells. The encoded protein interacts with LFA3 (CD58) on antigen presenting cells to optimize immune recognition. A locus control region (LCR) has been found in the 3' flanking sequence of this gene. [provided by RefSeq, Jun 2016]

VALIDATION IMAGES



Sample: Lane 1: Mouse Lymph node tissue lysates Lane 2: Rat Thymus tissue lysates Primary: Anti-CD2 (bs-23946R) at 1/1000 dilution Secondary: IRDye800CW Goat Anti-Rabbit IgG at 1/20000 dilution Predicted band size: 37 kDa Observed band size: 60 kDa