

bsm-34137M**[Primary Antibody]**

Pan Cytokeratin Mouse mAb

Bioss
ANTIBODIES

www.bioss.com.cn

sales@bioss.com.cn

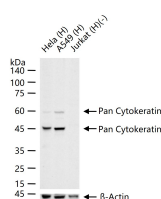
techsupport@bioss.com.cn

400-901-9800

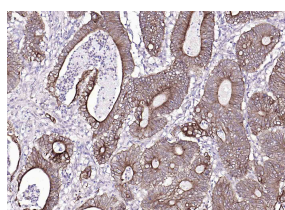
— DATASHEET —

Host: Mouse**Isotype:** IgG2b, Kappa**Clonality:** Monoclonal**CloneNo.:** 4C3**GeneID:** 3860**SWISS:** P08779**Target:** Pan Cytokeratin**Purification:** affinity purified by Protein A**Concentration:** 1mg/ml**Storage:** Liquid in PBS containing 50% Glycerol, 0.5% BSA and 0.02% Proclin300.
Shipped at 4°C. Store at -20°C for one year. Avoid repeated freeze/thaw cycles.**Background:** Cytokeratins are proteins of keratin-containing intermediate filaments found in the intracytoplasmic cytoskeleton of epithelial tissue. The cytokeratins are encoded by a family encompassing 30 genes. Among them, 20 are epithelial genes and the remaining 10 are specific for trichocytes. In the cytoplasm, the keratin filaments conform a complex network which extends from the surface of the nucleus to the cell membrane. Numerous accessory proteins are involved in the genesis and maintenance of such structure. This association between the plasma membrane and the nuclear surface provides important implications for the organization of the cytoplasm and cellular communication mechanisms. Apart from the relatively static functions provided in terms of supporting the nucleus and providing tensile strength to the cell, the cytokeratin networks undergo rapid phosphate exchanges mediated depolymerization, with important implications in the more dynamic cellular processes such as mitosis and post-mitotic period, cell movement and differentiation. Cytokeratins interact with desmosomes and hemidesmosomes, thus collaborating to cell-cell adhesion and basal cell-underlying connective tissue connection.**Applications:** **WB** (1:200-1000)
IHC-P (1:100-500)
IHC-F (1:100-500)
IF (1:100-500)**Reactivity:** Human, Mouse, Rat**Predicted MW.:** 42-64 kDa**Subcellular Location:** Cytoplasm

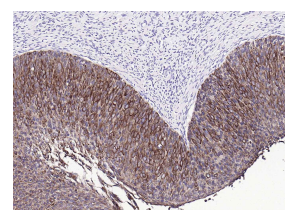
— VALIDATION IMAGES —



25 ug total protein per lane of various lysates (see on figure) probed with Pan Cytokeratin monoclonal antibody, unconjugated (bsm-34137M) at 1:250 dilution and 4°C overnight incubation. Followed by conjugated secondary antibody incubation at r.t. for 60 min.



Paraformaldehyde-fixed, paraffin embedded (human colon carcinoma); Antigen retrieval by boiling in sodium citrate buffer (pH6.0) for 15min; Block endogenous peroxidase by 3% hydrogen peroxide for 20 minutes; Blocking buffer (normal goat serum) at 37°C for 30min; Incubation with (Pan Cytokeratin) Monoclonal Antibody, Unconjugated (bsm-34137M) at 1:100 overnight at 4°C, followed by operating according to SP Kit(Mouse)(sp-0024) instructions and DAB staining.



Paraformaldehyde-fixed, paraffin embedded (human cervical carcinoma); Antigen retrieval by boiling in sodium citrate buffer (pH6.0) for 15min; Block endogenous peroxidase by 3% hydrogen peroxide for 20 minutes; Blocking buffer (normal goat serum) at 37°C for 30min; Incubation with (Pan Cytokeratin) Monoclonal Antibody, Unconjugated (bsm-34137M) at 1:100 overnight at 4°C, followed by operating according to SP Kit(Mouse)(sp-0024) instructions and DAB staining.