

bsm-60759R**[Primary Antibody]**

Bioss
ANTIBODIES

www.bioss.com.cn

sales@bioss.com.cn

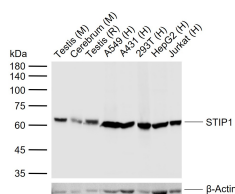
techsupport@bioss.com.cn

400-901-9800

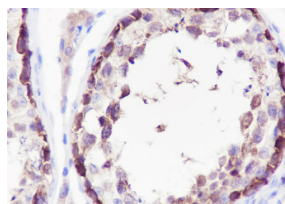
STIP1 Recombinant Rabbit mAb**— DATASHEET —****Host:** Rabbit**Clonality:** Recombinant**GeneID:** 6722**Target:** STIP1**Purification:** affinity purified by Protein A**Concentration:** 1mg/ml**Storage:** PBS, Glycerol, BSA.

Shipped at 4°C. Store at -20°C for one year. Avoid repeated freeze/thaw cycles.

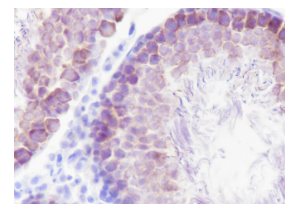
Background: This gene encodes a ubiquitous nuclear protein that stimulates both cell proliferation and differentiation. It is a member of the MADS (MCM1, Agamous, Deficiens, and SRF) box superfamily of transcription factors. This protein binds to the serum response element (SRE) in the promoter region of target genes. This protein regulates the activity of many immediate-early genes, for example c-fos, and thereby participates in cell cycle regulation, apoptosis, cell growth, and cell differentiation. This gene is the downstream target of many pathways; for example, the mitogen-activated protein kinase pathway (MAPK) that acts through the ternary complex factors (TCFs). [provided by RefSeq, Jul 2008].

Isotype: IgG**CloneNo.:** B5C7**SWISS:** P11831**Applications:** WB (1:500-2000)**IHC-P** (1:100-500)**IHC-F** (1:400-800)**IF** (1:100-500)**Flow-Cyt** (1:50-100)**ICC/IF** (1:100-500)**Reactivity:** Human, Mouse, Rat**Predicted MW.:** 63 kDa**Subcellular Location:** Nucleus**— VALIDATION IMAGES —**

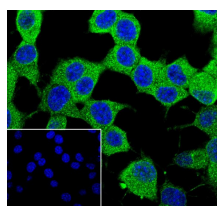
Sample: Lane 1: Mouse Testis tissue lysates Lane 2: Mouse Cerebrum tissue lysates Lane 3: Rat Testis tissue lysates Lane 4: Human A549 cell lysates Lane 5: Human A431 cell lysates Lane 6: Human 293T cell lysates Lane 7: Human HepG2 cell lysates Lane 8: Human Jurkat cell lysates Primary: Anti-STIP1 (bsm-60759R) at 1/1000 dilution Secondary: IRDye800CW Goat Anti-Rabbit IgG at 1/20000 dilution Predicted band size: 63 kDa Observed band size: 63 kDa



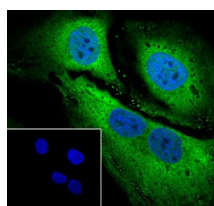
Tissue: Human testis Section type: Formalin fixed & Paraffin-embedded section Retrieval method: High temperature and high pressure Retrieval buffer: Tris/EDTA buffer, pH 9.0 Primary Ab dilution: 1:1000 Primary Ab incubation condition: 1 hour at room temperature Secondary Ab: SP Kit(Rabbit) (sp-0023) Counter stain: Hematoxylin (Blue) Comment: Color brown is the positive signal for bsm-60759R



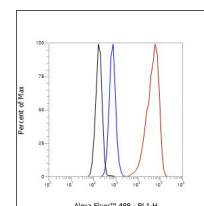
Tissue: Rat testis Section type: Formalin fixed & Paraffin-embedded section Retrieval method: High temperature and high pressure Retrieval buffer: Tris/EDTA buffer, pH 9.0 Primary Ab dilution: 1:1000 Primary Ab incubation condition: 1 hour at room temperature Secondary Ab: SP Kit(Rabbit) (sp-0023) Counter stain: Hematoxylin (Blue) Comment: Color brown is the positive signal for bsm-60759R



Cell line: Neuro-2a Fixation: 4% Paraformaldehyde Permeabilization: 0.1% TritonX-100 Primary Ab dilution: 1:500 Primary Ab incubation condition: 4°C overnight Secondary Ab: Goat Anti-Rabbit IgG Nuclear counter stain: DAPI (Blue) Comment: Color green is the positive signal for bsm-60759R



Cell line: HeLa Fixation: 4% Paraformaldehyde Permeabilization: 0.1% TritonX-100 Primary Ab dilution: 1:500 Primary Ab incubation condition: 4°C overnight Secondary Ab: Goat Anti-Rabbit IgG Nuclear counter stain: DAPI (Blue) Comment: Color green is the positive signal for bsm-60759R



Cell line: HeLa Fixation: 4% Paraformaldehyde Permeabilization: 90% Methanol Primary Ab dilution: 1:100 Secondary Ab: Goat Anti-Rabbit IgG Unlabelled control: The cell without incubation with primary antibody and secondary antibody (Black line). Isotype control: Rabbit monoclonal IgG (Blue line). Comment: Line red is the positive signal for

Important Note: This product as supplied is intended for research use only, not for use in human, therapeutic or diagnostic applications.