

bs-7860R

[Primary Antibody]

DLL3 Rabbit pAb

Bioss
ANTIBODIES

www.bioss.com.cn

sales@bioss.com.cn

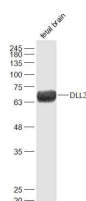
techsupport@bioss.com.cn

400-901-9800

— DATASHEET —

Host: Rabbit	Isotype: IgG	Applications: WB (1:500-2000)
Clonality: Polyclonal		Reactivity: Human, Mouse (predicted: Rabbit, Cow, Dog, Horse)
GeneID: 10683	SWISS: Q9NYJ7	Predicted MW.: 65 kDa
Target: DLL3		Subcellular Location: Cell membrane
Immunogen: KLH conjugated synthetic peptide derived from human DLL3: 51-150/618. < Extracellular >		
Purification: affinity purified by Protein A		
Concentration: 1mg/ml		
Storage: 0.01M TBS (pH7.4) with 1% BSA, 0.02% Proclin300 and 50% Glycerol. Shipped at 4°C. Store at -20°C for one year. Avoid repeated freeze/thaw cycles.		
Background: Delta-like 3 (DLL3) is a transmembrane Delta-like protein that inhibits primary neurogenesis. It may be required to divert neurons along a specific differentiation pathway and plays a role in the formation of somite boundaries during segmentation of the paraxial mesoderm. DLL3 is one of five DSL proteins that bind to the Notch receptor and activates Notch signaling.		

— VALIDATION IMAGES —



Sample: Fetal brain (Mouse) Lysate at 40 ug
Primary: Anti-DLL3 (bs-7860R) at 1/1000 dilution
Secondary: IRDye800CW Goat Anti-Rabbit IgG at 1/20000 dilution
Predicted band size: 65 kD
Observed band size: 65 kD

— SELECTED CITATIONS —

- **[IF=2.886]** Xiao Fu. et al. PD-L1 Predicts Poor Prognosis in Surgically Resected Limited Stage Small-Cell Lung Cancer. Cancer Manag Res. 2020; 12: 10939–10948 IHC ;Human. 33154673